

Straddle SMT type female connector for PCB HDRA-E68FT+

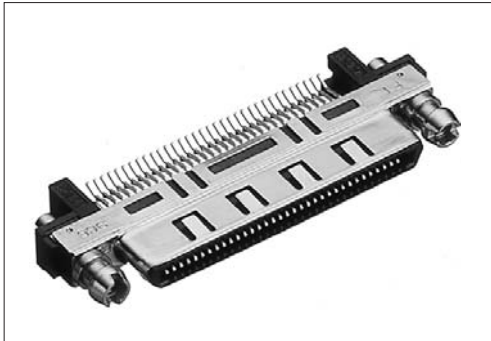
RoHS

0.8mm pitch connector

For PCB

Straddle SMT

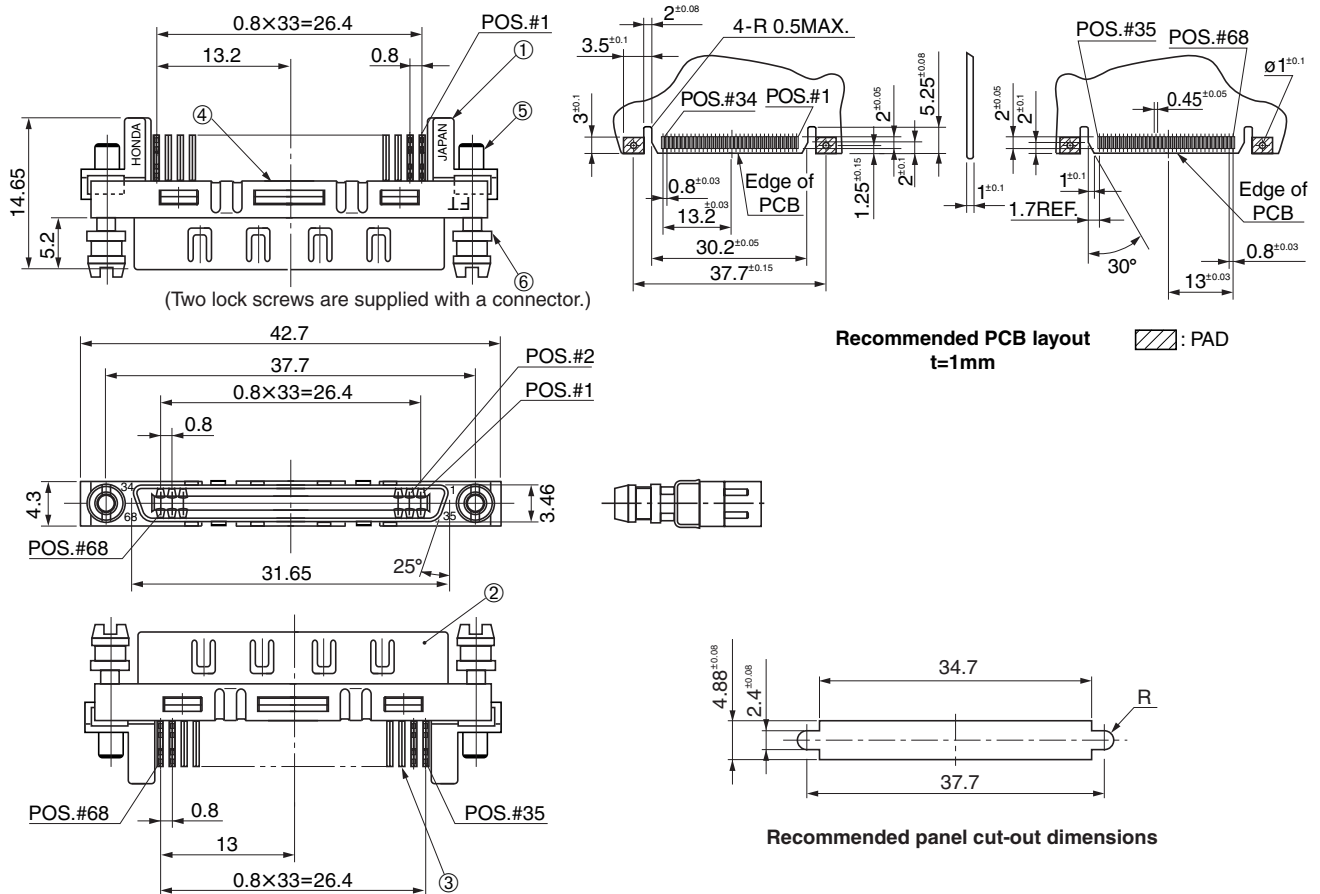
ANSI/SFF8441



● Configuration of product Part No.

HDRA- E 68 FT+

- ① Series name
② No. of contacts: 68
③ Type of contact
FT: Straddle SMT type, female



● Components

①	Insulator A
②	Shell
③	Contacts
④	Insulator B
⑤	Square nuts
⑥	Lock screw

Select the connector according to panel thickness.
For the application without panel, use washers or special lock screw (P/N: HDRA-E68LFD-7C).

Mating connector: HDRA series IDC type male cable connector, or straddle SMT type male connector