

EAS, EBS Series

Snap-in
Compact RFI Filter
IEC Connector Package



UL Recognized
CSA Certified
VDE Approved

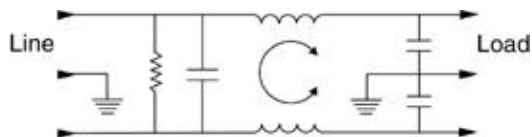
EAS Series

This filter offers the performance characteristics of the EEA susceptibility filter with the additional advantage of a snap-in panel mount. The EAS series supersedes the EF series by providing superior performance, particularly in the common mode at low frequencies.

EBS Series

This filter offers the performance characteristics of the EEB susceptibility filter with the additional advantage of a snap-in panel mount. The EBS provides enhanced differential mode performance compared to both the EAS and EF series.

Electrical Schematic



Resistor location for reference only.



Specifications

Maximum leakage current, each

| | | |
|----------------|------------------|-------|
| line-to-ground | @ 120 VAC 60 Hz: | .22mA |
| | @ 250 VAC 50 Hz: | .38mA |

Hipot rating (one minute):

| | |
|----------------|----------|
| line-to-ground | 1500 VAC |
| line-to-line | 1450 VDC |

Operating frequency:

50/60 Hz

Rated voltage:

120/250 VAC

Minimum insertion loss in dB:

EAS

Line-to-ground in 50 ohm circuit

| Current Rating | Frequency-MHz | | | | | | | | |
|----------------|---------------|-----|----|-----|----|----|----|----|----|
| | .01 | .05 | .1 | .15 | .5 | 1 | 5 | 10 | 30 |
| 1A | 12 | 23 | 29 | 32 | 41 | 47 | 47 | 47 | 40 |
| 3A | - | 10 | 15 | 19 | 30 | 36 | 48 | 50 | 47 |
| 6A | - | 1 | 4 | 10 | 22 | 28 | 42 | 48 | 47 |
| 10A | - | 1 | 3 | 5 | 14 | 20 | 32 | 38 | 47 |
| 15A | - | - | - | 1 | 5 | 8 | 20 | 26 | 40 |

Line-to-line in 50 ohm circuit

| Current Rating | Frequency-MHz | | | | | | |
|----------------|---------------|---|-----|----|----|----|----|
| | .5 | 1 | 1.5 | 3 | 5 | 10 | 30 |
| 1A | 1 | 9 | 19 | 32 | 42 | 45 | 40 |
| 3A | 2 | 4 | 6 | 20 | 35 | 45 | 40 |
| 6A | 2 | 4 | 6 | 6 | 24 | 40 | 40 |
| 10A | 1 | 4 | 5 | 5 | 5 | 30 | 40 |
| 15A | 1 | 4 | 6 | 12 | 14 | 15 | 40 |

EBS

Line-to-ground in 50 ohm circuit

| Current Rating | Frequency-MHz | | | | | | | | |
|----------------|---------------|-----|----|-----|----|----|----|----|----|
| | .01 | .05 | .1 | .15 | .5 | 1 | 5 | 10 | 30 |
| 1A | 12 | 23 | 29 | 32 | 41 | 47 | 47 | 47 | 40 |
| 3A | - | 10 | 14 | 18 | 30 | 36 | 48 | 50 | 47 |
| 6A | - | 1 | 4 | 10 | 22 | 28 | 42 | 48 | 47 |
| 10A | - | 1 | 3 | 5 | 14 | 20 | 32 | 38 | 47 |
| 15A | - | - | - | 1 | 5 | 8 | 20 | 26 | 40 |

Line-to-line in 50 ohm circuit

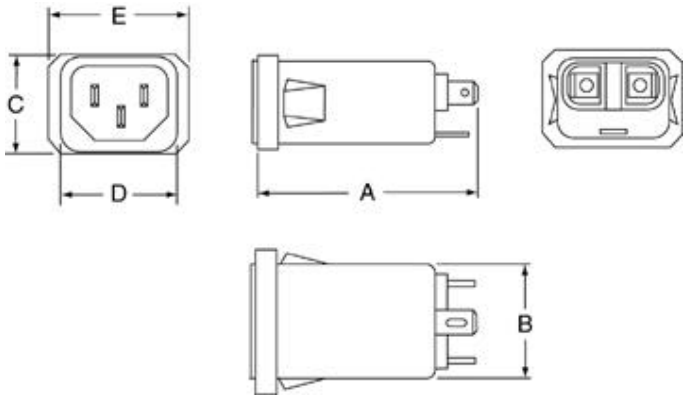
| Current Rating | Frequency-MHz | | | | | | | |
|----------------|---------------|-----|----|----|----|----|----|----|
| | .01 | .15 | .5 | 1 | 3 | 5 | 10 | 30 |
| 1A | 1 | 3 | 14 | 23 | 41 | 47 | 50 | 44 |
| 3A | 1 | 2 | 11 | 14 | 25 | 38 | 44 | 40 |
| 6A | 1 | 2 | 10 | 14 | 20 | 33 | 42 | 40 |
| 10A | 1 | 2 | 10 | 16 | 19 | 19 | 39 | 40 |
| 15A | - | 2 | 10 | 16 | 24 | 28 | 28 | 40 |

Series EAS, EBS

Case Style

Metric shown in italics.

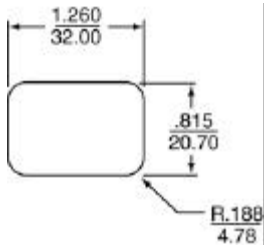
EAS1/EBS1



Typical dimensions

Terminals: $\frac{.25}{6.35}$ (3) Holes: $\frac{.07}{1.8}$ Dia. (2) Slots: $\frac{.07 \times .16}{1.8 \times 4.1}$

Recommended Panel Cutout



Front Mount Only
Panel Thickness .031" - .047"
(.78 mm - 1.19 mm)

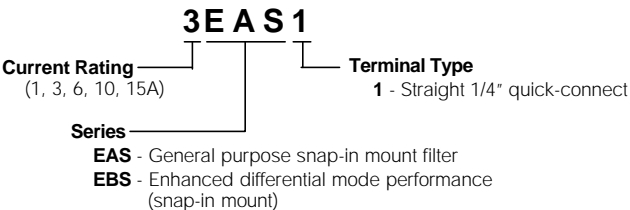
Case Dimensions

Metric shown in italics.

| Part No. | A (max) | B (max) | C (max) | D $\frac{+.010}{-.25}$ | E (max) |
|----------|---------------------|---------------------|--------------------|---------------------------|----------------------|
| EAS1 | $\frac{2.2}{55.88}$ | $\frac{1.15}{29.2}$ | $\frac{.9}{22.86}$ | $\frac{1.185}{30.1}$ | $\frac{1.35}{34.21}$ |
| EBS1 | $\frac{2.2}{55.88}$ | $\frac{1.15}{29.2}$ | $\frac{.9}{22.86}$ | $\frac{1.185}{30.1}$ | $\frac{1.35}{34.21}$ |

Ordering Information

Consult your local Corcom sales representative for pricing.



Available Part Numbers

| | |
|--------|--------|
| 1EAS1 | 1EBS1 |
| 3EAS1 | 3EBS1 |
| 6EAS1 | 6EBS1 |
| 10EAS1 | 10EBS1 |
| 15EAS1 | 15EBS1 |

Accessory Line Cord No. GA400

7 1/2 foot, 3 conductor line cord to mate with filter IEC input connector. 1250 watt, 10A-125 VAC, black SVT cord, UL listed, CSA certified

Accessory Insulating Boot No. FA601

Plastic shroud to cover terminals on back of filter (style 1 terminals only)