

# STANDOFFS, THREADED, ROUND - CHASSIS FASTENERS

## STANDOFFS THREADED, ROUND

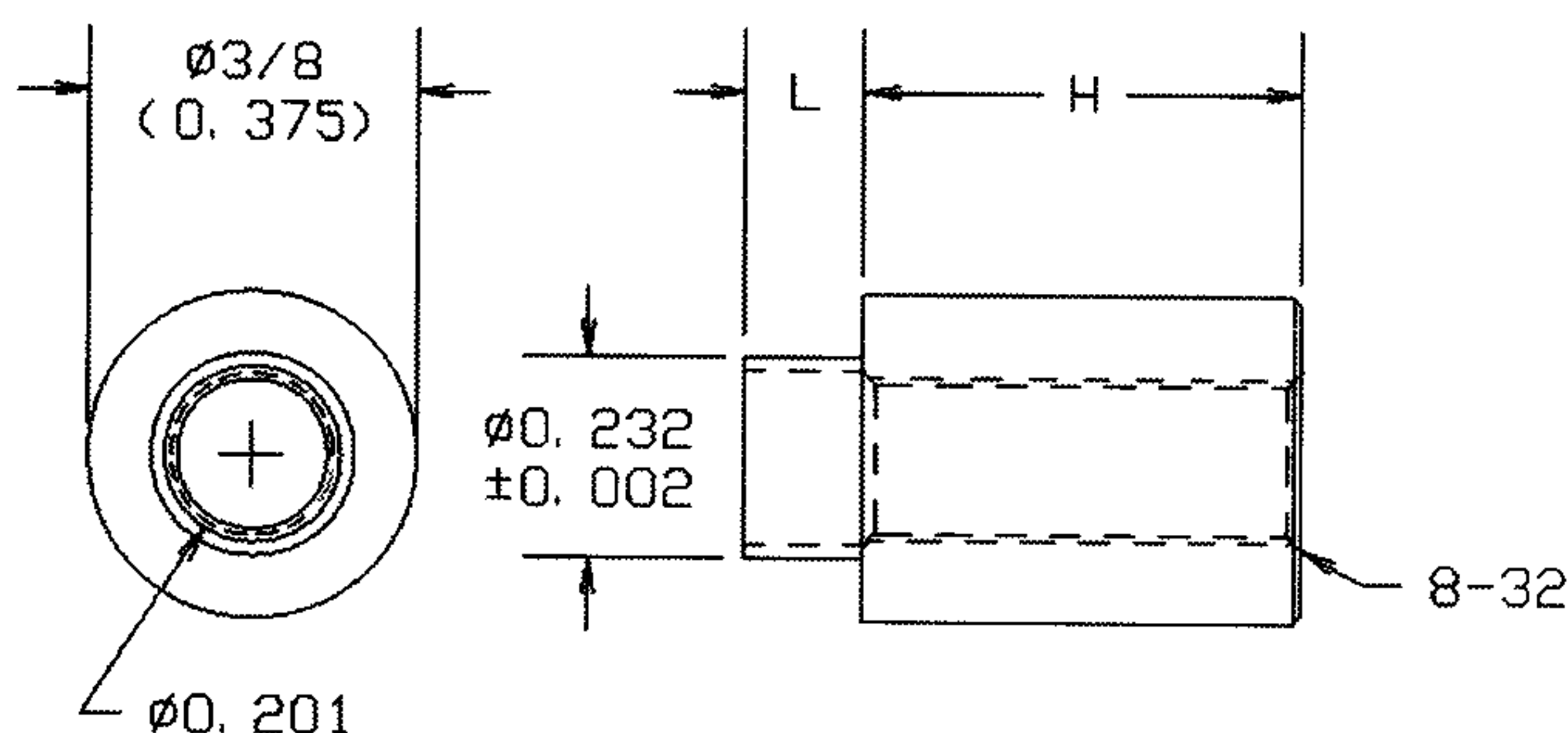
**523-9XXX-02**

**623A-9XXX-XX**

BASIC PART NO. FINISH

**BRASS PER ASTM B16**

**ALUMINUM PER ASTM B211**



BOARD THICKNESS	H	L	BRASS	ALUMINUM
1/32	.125	.075	523-9808	623A-9808
1/32	.188	.075	523-9822	623A-9822
1/32	.250	.075	523-9829	623A-9829
1/32	.375	.075	523-9843	623A-9843
1/32	.500	.075	523-9857	623A-9857
1/32	.625	.075	523-9871	623A-9871
1/32	.750	.075	523-9885	623A-9885
1/32	1.000	.075	523-9913	623A-9913
1/16	.125	.105	523-9809	623A-9809
1/16	.188	.105	523-9823	623A-9823
1/16	.250	.105	523-9830	623A-9830
1/16	.375	.105	523-9844	623A-9844
1/16	.500	.105	523-9858	623A-9858
1/16	.625	.105	523-9872	623A-9872
1/16	.750	.105	523-9886	623A-9886
1/16	1.000	.105	523-9914	623A-9914
3/32	.125	.135	523-9810	623A-9810
3/32	.188	.135	523-9824	623A-9824
3/32	.250	.135	523-9831	623A-9831
3/32	.375	.135	523-9845	623A-9845
3/32	.500	.135	523-9859	623A-9859
3/32	.625	.135	523-9873	623A-9873
3/32	.750	.135	523-9887	623A-9887
3/32	1.000	.135	523-9915	623A-9915

BOARD THICKNESS	H	L	BRASS	ALUMINUM
1/8	.125	.165	523-9811	623A-9811
1/8	.188	.165	523-9825	623A-9825
1/8	.250	.165	523-9832	623A-9832
1/8	.375	.165	523-9846	623A-9846
1/8	.500	.165	523-9860	623A-9860
1/8	.625	.165	523-9874	623A-9874
1/8	.750	.165	523-9888	623A-9888
1/8	1.000	.165	523-9916	623A-9916
3/16	.125	.230	523-9813	623A-9813
3/16	.188	.230	523-9827	623A-9827
3/16	.250	.230	523-9834	623A-9834
3/16	.375	.230	523-9848	623A-9848
3/16	.500	.230	523-9862	623A-9862
3/16	.625	.230	523-9876	623A-9876
3/16	.750	.230	523-9890	623A-9890
3/16	1.000	.230	523-9918	623A-9918
1/4	.125	.290	523-9814	623A-9814
1/4	.188	.290	523-9828	623A-9828
1/4	.250	.290	523-9835	623A-9835
1/4	.375	.290	523-9849	623A-9849
1/4	.500	.290	523-9863	623A-9863
1/4	.625	.290	523-9877	623A-9877
1/4	.750	.290	523-9891	623A-9891
1/4	1.000	.290	523-9919	623A-9919

### SWAGING TOOLS

H	ANVIL	PUNCH
.125	TA375-125	TP232-201
.188	TA375-125	TP232-201
.250	TA375-250	TP232-201
.375	TA375-250	TP232-201
.500	TA375-500	TP232-201
.625	TA375-500	TP232-201
.750	TA375-750	TP232-201
1.000	TA375-750	TP232-201

- FOR BRASS PARTS, ADD -02 SUFFIX TO PART NUMBER FOR STANDARD NICKEL FINISH
- FOR ALUMINUM PARTS, ADD -17 SUFFIX TO PART NUMBER FOR STANDARD NON-CHROMATE CLEAR PROTECTIVE COATING OR -16 FOR YELLOW IRRIDITE FINISH.

## CHASSIS FASTENERS

MATERIAL: BRASS PER ASTM B16  
ALUMINUM PER ASTM B211

PART NO. CHANGED FOR BRASS OR ALUMINUM  
PER THIS EXAMPLE

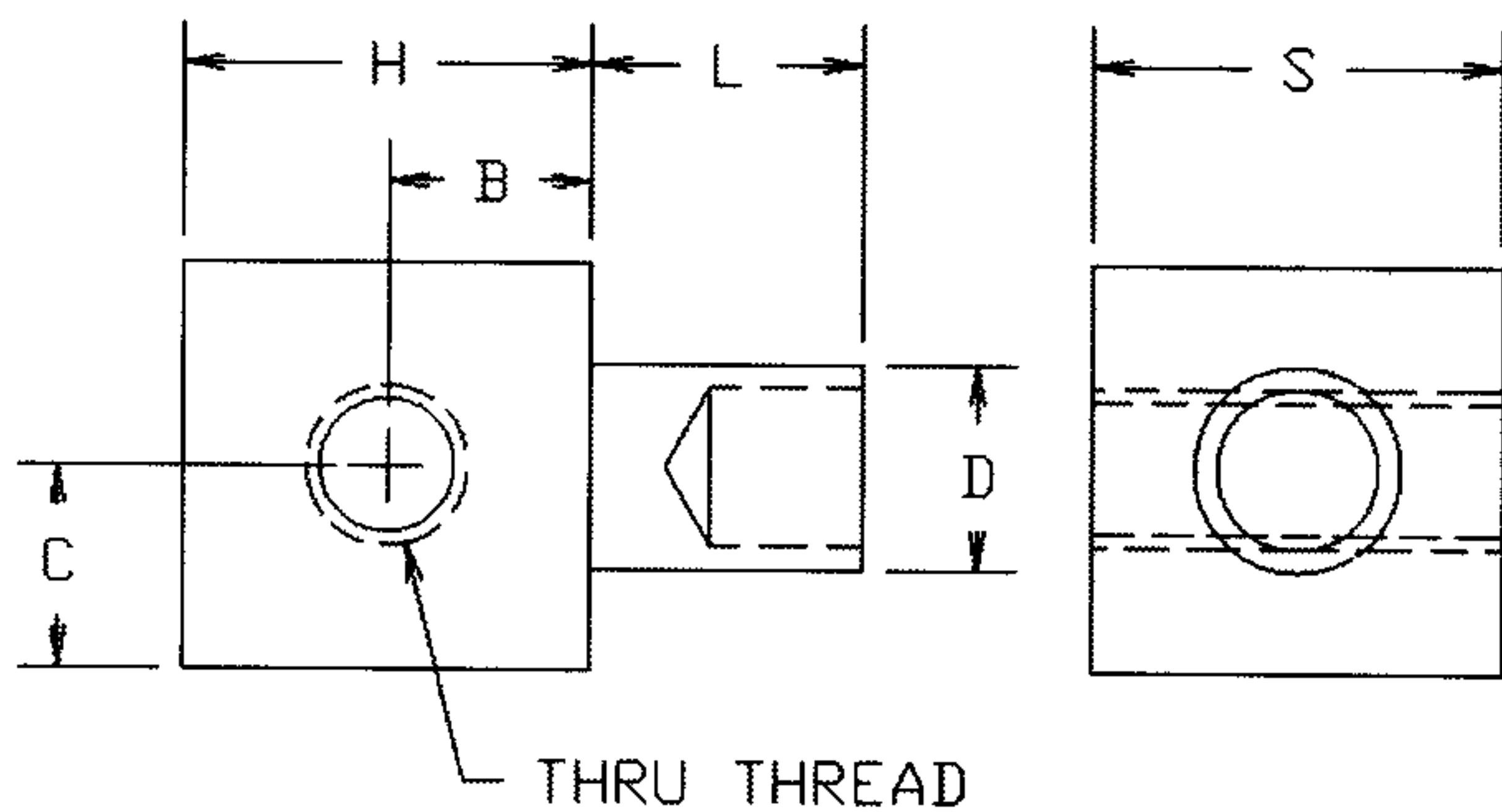
**90-9450-044**

BRASS. BRIGHT TIN PL.

**90-9550-16**

ALUMINUM. YELLOW IRRIDITE

PART NO	D	H	B	S	C	L	T	THREAD
90-9X50	.126	.250	.125	.250	.125	.075	1/32	4-40
90-9X51	.126	.250	.125	.250	.125	.105	1/16	4-40
90-9X52	.126	.250	.125	.250	.125	.135	3/32	4-40
90-9X53	.126	.250	.125	.250	.125	.165	1/8	4-40
90-9X55	.188	.380	.219	.312	.156	.105	1/16	6-32
90-9X56	.188	.380	.219	.312	.156	.135	3/32	6-32
90-9X57	.188	.380	.219	.312	.156	.165	1/8	6-32



FOR ADDITIONAL SIZES AND MATERIALS, CONTACT FACTORY

