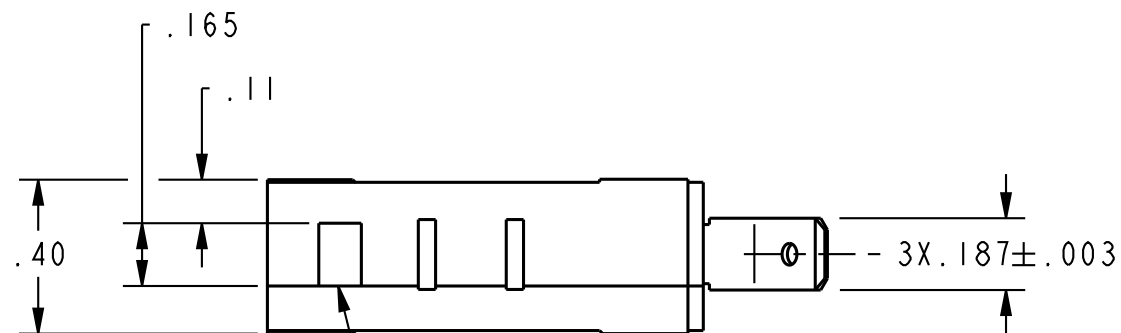
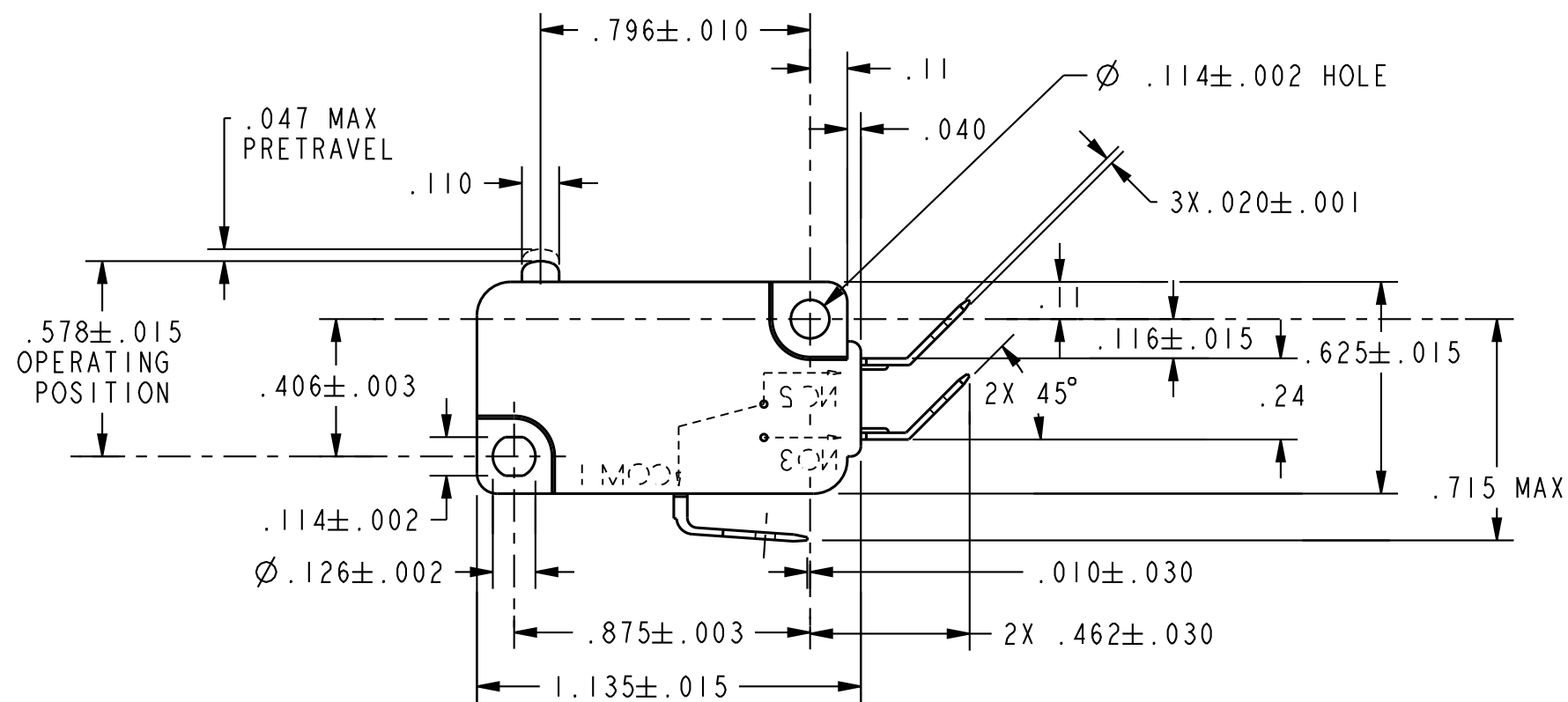


| REV | DOCUMENT | CHANGED BY | CHECK |
|-----|----------|-------------|-------|
| 5 | 0086919 | VKR 28FEB12 | CMH |



PLASTIC PLUNGER



| CHARACTERISTICS | |
|--------------------------|---------------|
| OPERATING FORCE----- | 150 GRAMS MAX |
| RELEASE FORCE----- | 25 GRAMS MIN |
| DIFFERENTIAL TRAVEL----- | .002-.010 |
| OVERTRAVEL----- | .050 MIN |
| FREE POSITION ----- | .625 MAX |
| RELEASE TRAVEL----- | .010 MIN |

| ELECTRICAL DATA | |
|---------------------------------|--|
| CONTACT ARRANGEMENT S P D T | |
| L215 | |
| 15.1A 1/2HP 125, 250 OR 277 VAC | |
| 1/2A 125 VDC | |
| 1/4A 250 VDC; 5A 125 VAC "L" | |

| UNLESS OTHERWISE SPECIFIED TOLERANCES ARE: | | | |
|--|---|---|-------|
| | <input checked="" type="checkbox"/> US (inch) CUSTOMARY | <input type="checkbox"/> SI (mm) METRIC | |
| NO PLACE | X | ±.040 | ±1 |
| ONE PLACE | .X | ±.030 | ±0.4 |
| TWO PLACE | .XX | ±.015 | ±0.15 |
| THREE PLACE | .XXX | ±.005 | ± |
| ANGLES | | ± 3° | ± |
| RAW MATERIAL-COMMERCIAL STANDARD | | | |
| THIRD ANGLE PROJECTION | | | |

| | | |
|--|------------------|---------|
| DRAWN | LJK | 12AUG02 |
| CHECK | SAV | 12AUG02 |
| THIS DRAWING COVERS A PROPRIETARY ITEM AND IS THE PROPERTY OF HONEYWELL. THIS DRAWING IS NOT TO BE COPIED OR USED WITHOUT THE PERMISSION OF HONEYWELL. | | |
| DIMENSIONS ARE TO BE MET BEFORE PROTECTIVE COATINGS ARE APPLIED | | |
| PTC 2D | ASME Y14.5M-1994 | |

| | | | |
|-------------------------------|----------|--------------------|--------------|
| Honeywell | | | |
| TITLE SWITCH, BASIC | | | |
| SIZE | DWG TYPE | DRAWING NAME | REV |
| B | I | V7-1C17D844 | 5 |
| SCALE | - | WEIGHT | SHEET 1 OF 1 |

