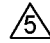
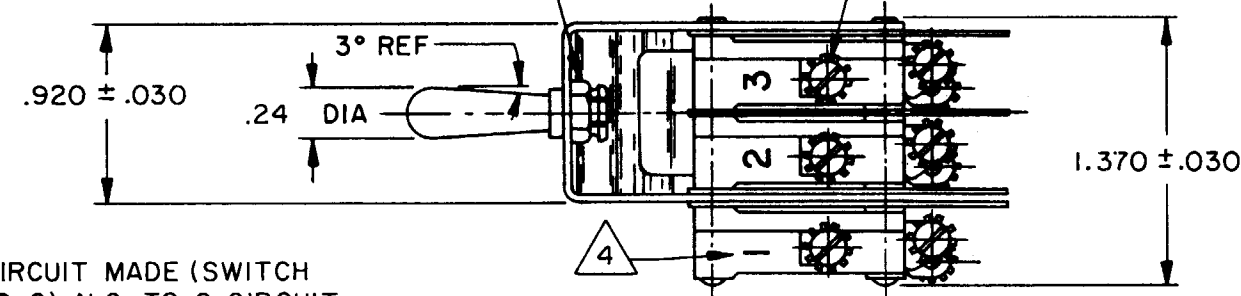


HONEYWELL
PART NUMBER
15AT48
FAA - PMA 

REV	DOCUMENT	CHANGED BY	CHECK
9	0007403	KR 24AUG04	AK

6-32 UNC (LOCKING TYPE NUT)(2)

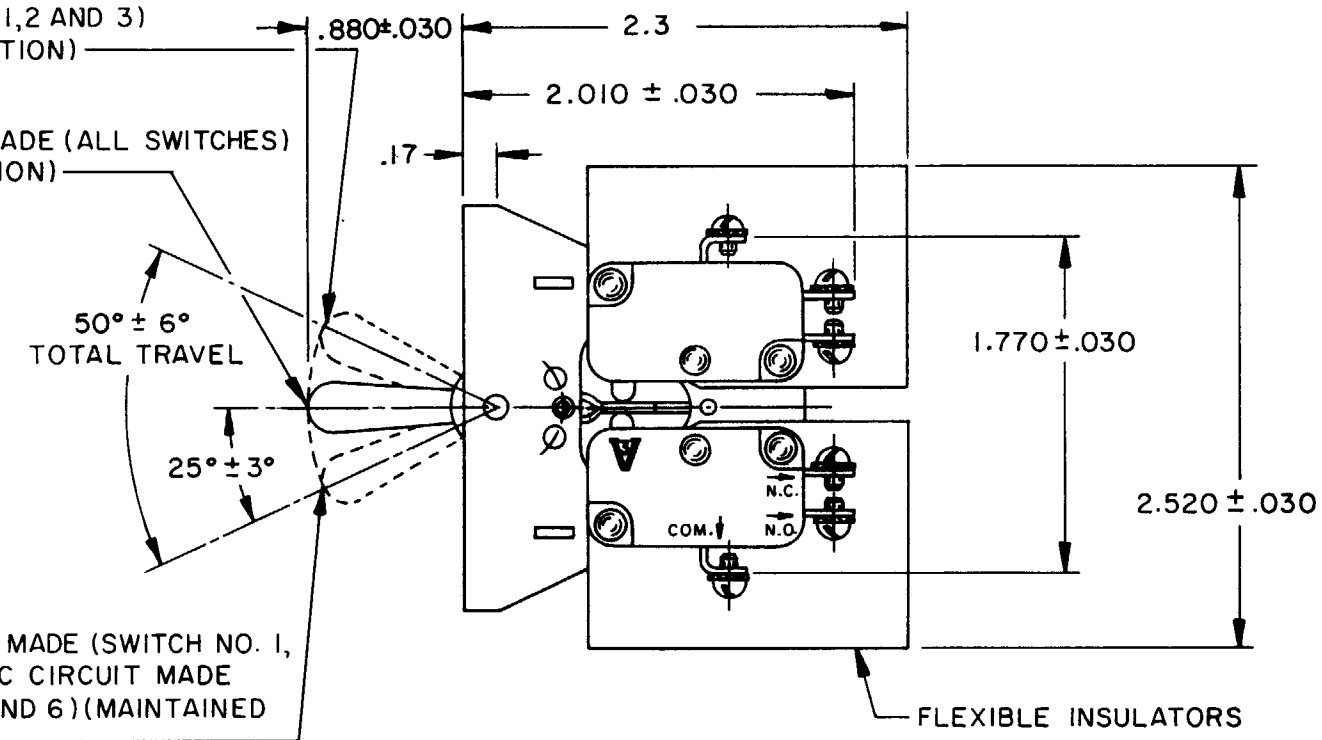
4-40 UNC X .125 REF ROUND HEAD
TERMINAL SCREWS AND LOCKWASHERS


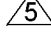


N.O. TO C CIRCUIT MADE (SWITCH
NO. 4,5 AND 6) N.C. TO C CIRCUIT
MADE (SWITCH NO. 1,2 AND 3)
(MAINTAINED POSITION)

N.C. TO C CIRCUIT MADE (ALL SWITCHES)
(MAINTAINED POSITION)

N.O. TO C CIRCUIT MADE (SWITCH NO. 1,
2, AND 3) N.C. TO C CIRCUIT MADE
(SWITCH NO. 4,5 AND 6)(MAINTAINED
POSITION)



- NOTES**
- 1 - UNIT INCLUDES CATALOG LISTING V3-1375 TYPE BASIC SWITCH (6)
 - 2 - SWITCHES DO NOT OPERATE SIMULTANEOUSLY
 - 3 - BASIC SWITCHES HAVE GOLD ALLOY CONTACTS
 -  BASIC SWITCH NUMBER MARKED ON EACH BASIC SWITCH
 -  FOR MANUFACTURING DETAIL SEE ASSEMBLY DRAWING 15AT48 FOR FAA-PMA

B

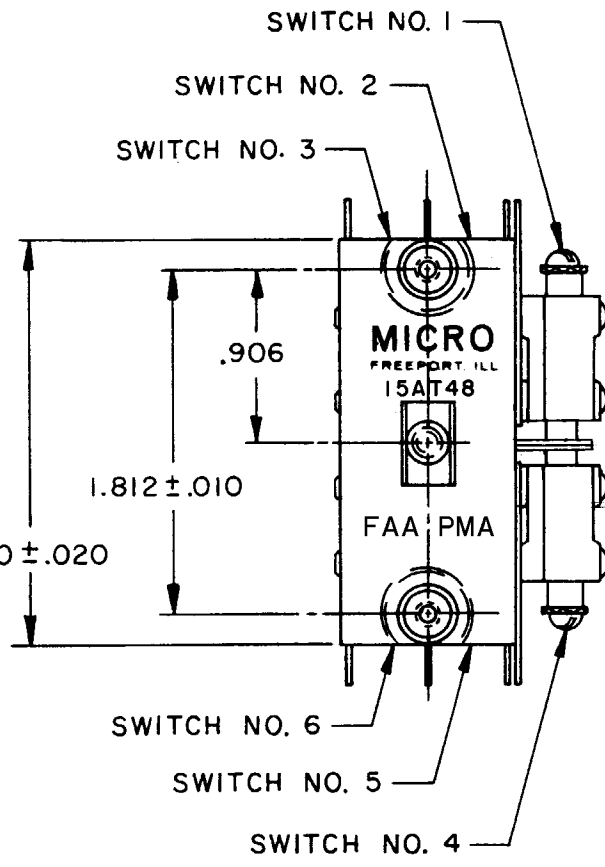
B

A

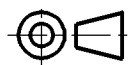
A

A

A



ELECTRICAL DATA	
CONTACT ARRANGEMENT	S P D T (6)
VOLTAGE	1A-125 VAC

DESIGN UNITS: INCH	
TOLERANCES UNLESS NOTED:	
NO PLACE	X ±
ONE PLACE	.X ±
TWO PLACE	.XX ±
THREE PLACE	.XXX ±
FOUR PLACE	.XXXX ±
ANGLES	±
THIRD ANGLE PROJECTION	
	

DRAWN	TSK	25APR83
CHECK	DJW	25APR83
THIS DRAWING COVERS A PROPRIETARY ITEM AND IS THE PROPERTY OF HONEYWELL. THIS DRAWING IS NOT TO BE COPIED OR USED WITHOUT THE PERMISSION OF HONEYWELL.		
INTERPRET PER ASME Y14.5M-1994 OTHER HONEYWELL ENGINEERING STANDARDS MAY APPLY		
RASTER		

Honeywell			
TITLE ASSEMBLY - TOGGLE SWITCH			
SIZE	TYPE	DRAWING NAME	REV
B	I	15AT48	9
SCALE	1:1	SHEET	1 OF 1