

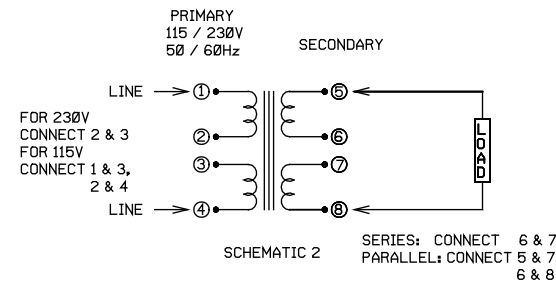
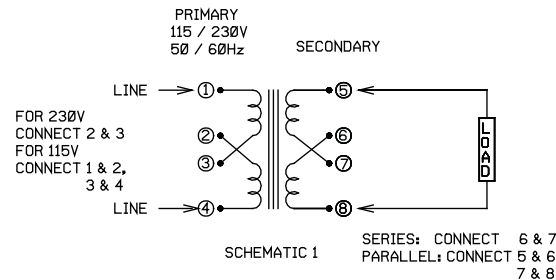
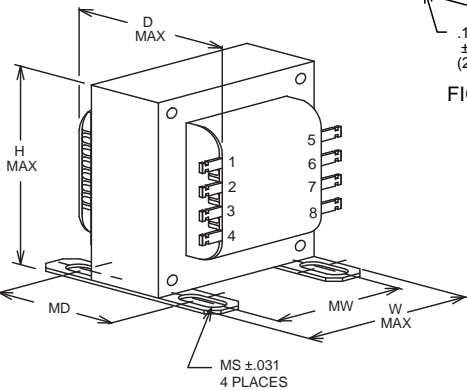
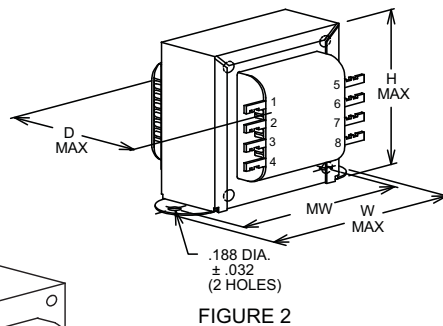
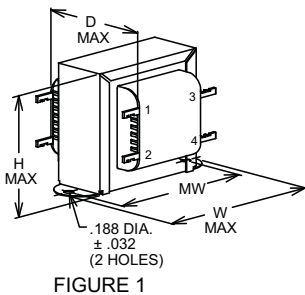


⚠ WARNING	
	ELECTROCUTION HAZARD
	Disconnect electric power to system at main fuse or circuit breaker box before servicing. Failure to do so could result in death or serious injury.
	FIRE HAZARD
	Do not exceed transformer ratings. Higher voltage may damage control and could cause personal injury or property damage.

INPUT:	115 / 230VAC, 50/60Hz
OUTPUT:	See Output Amp rating & VA Capacity in table below
INSULATION RATING:	Class A (105°C)
TEMPERATURE RISE:	65°C Max. rise over 40°C Max. ambient
DIELECTRIC STRENGTH:	1500 VRMS
AGENCY STANDARDS:	UL Recognized to UL 506
FILE NUMBERS:	E68100

NOTES:

1. All dimensions in inches, unless otherwise specified.
2. All dimensions $\pm .062$, unless otherwise specified.
3. Solder Lug termination.



STANCOR Part Number	Dims. Fig.	Schematic Diagram	V.A. Cap.	Output from two Secondary Windings			Dimensions - Inches						WT. Lbs.
				Individual Volts Amps	Parallel Volts Amps	Series Volts Amps	H	W	D	MW	MD	MS	
P-6375	1	2	12	6 @ 1.0	6 @ 2.0	12 @ 1.0	2.44	2.94	1.88	2.38	-	-	1.0
P-6376	1	2	24	6 @ 2.0	6 @ 4.0	12 @ 2.0	2.75	3.19	2.13	2.81	-	-	1.5
P-6377	2	1	48	12 @ 2.0	12 @ 4.0	24 @ 2.0	3.19	3.69	2.38	3.13	-	-	2.5
P-6378	3	1	96	12 @ 4.0	12 @ 8.0	24 @ 4.0	3.56	2.88	3.19	2.25	2.31	.187 X .312	4.2
P-6379	3	1	192	12 @ 8.0	12 @ 16.0	24 @ 8.0	4.25	3.44	3.62	2.75	3.13	.203 X .500	8.0
P-8615	1	2	12	24 @ .25	24 @ .50	48 @ .25	2.44	2.94	1.88	2.38	-	-	1.0
P-8616	1	2	24	24 @ .50	24 @ 1.0	48 @ .50	2.75	3.19	2.13	2.81	-	-	1.5
P-8617	2	1	48	24 @ 1.0	24 @ 2.0	48 @ 1.0	3.19	3.69	2.38	3.13	-	-	2.5
P-8618	3	1	96	24 @ 2.0	24 @ 4.0	48 @ 2.0	3.56	2.88	3.19	2.25	2.31	.187 X .312	4.2
P-8619	3	1	192	24 @ 4.0	24 @ 8.0	48 @ 4.0	4.25	3.44	3.62	2.75	3.13	.203 X .500	8.0