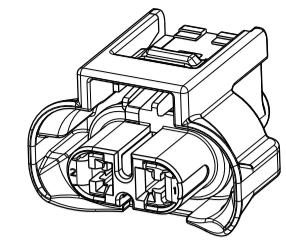
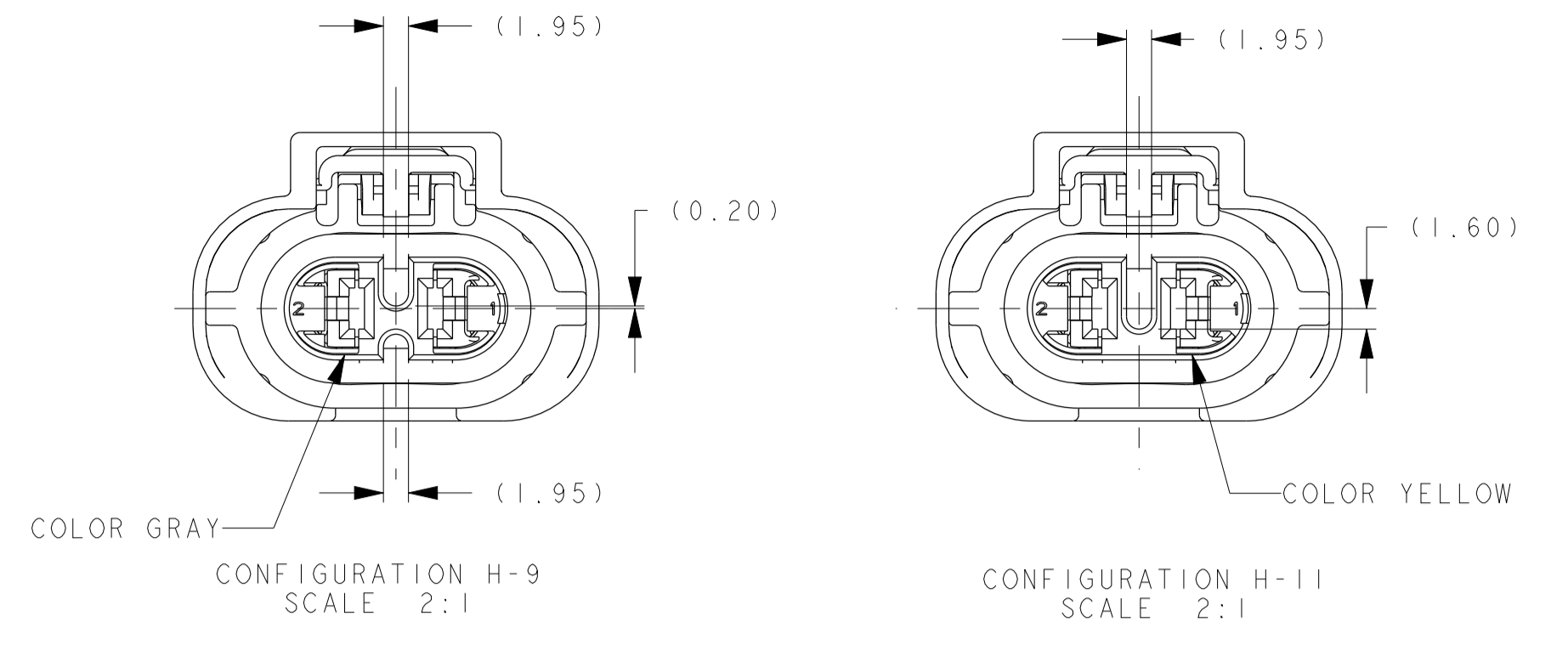


COMPONENTS LIST							
CONFIGURATION	CUST PART NO.	ASSY PART NO.	PART NUMBERS				
	GM		ITEM 1 TPA	ITEM 1 TPA COLOR	ITEM 2 SEAL	ITEM 3 HOUSING	ITEM 4 CPA
H-9 WITH CPA	-	F984300	C594300	GRAY	240M041	S394300	F752210
H-11 WITH CPA	-	F094300	C494300	YELLOW			
H-9 W/O CPA	13576003	F294300	C594300	GRAY	240M041	S394300	N/A
H-11 W/O CPA	13576004	F194300	C494300	YELLOW			

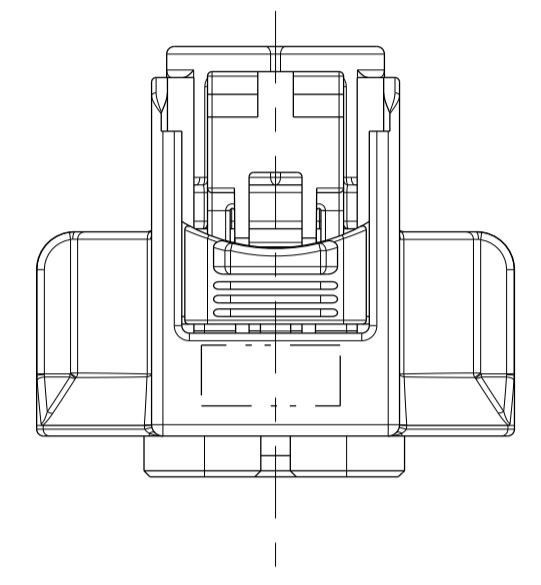


SCALE 1:1

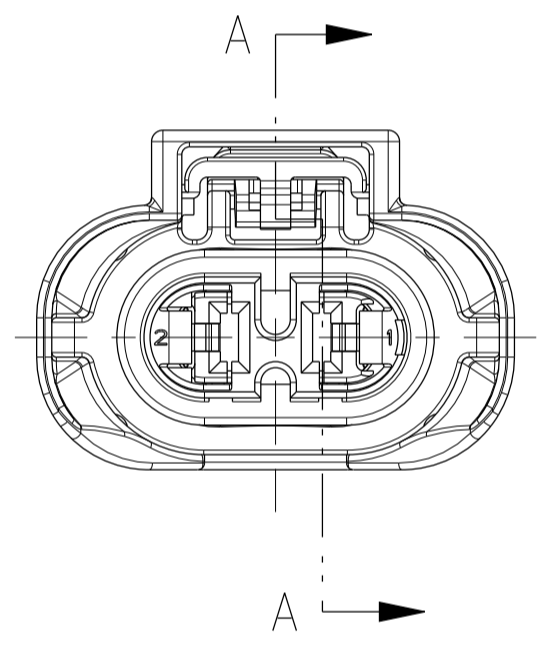
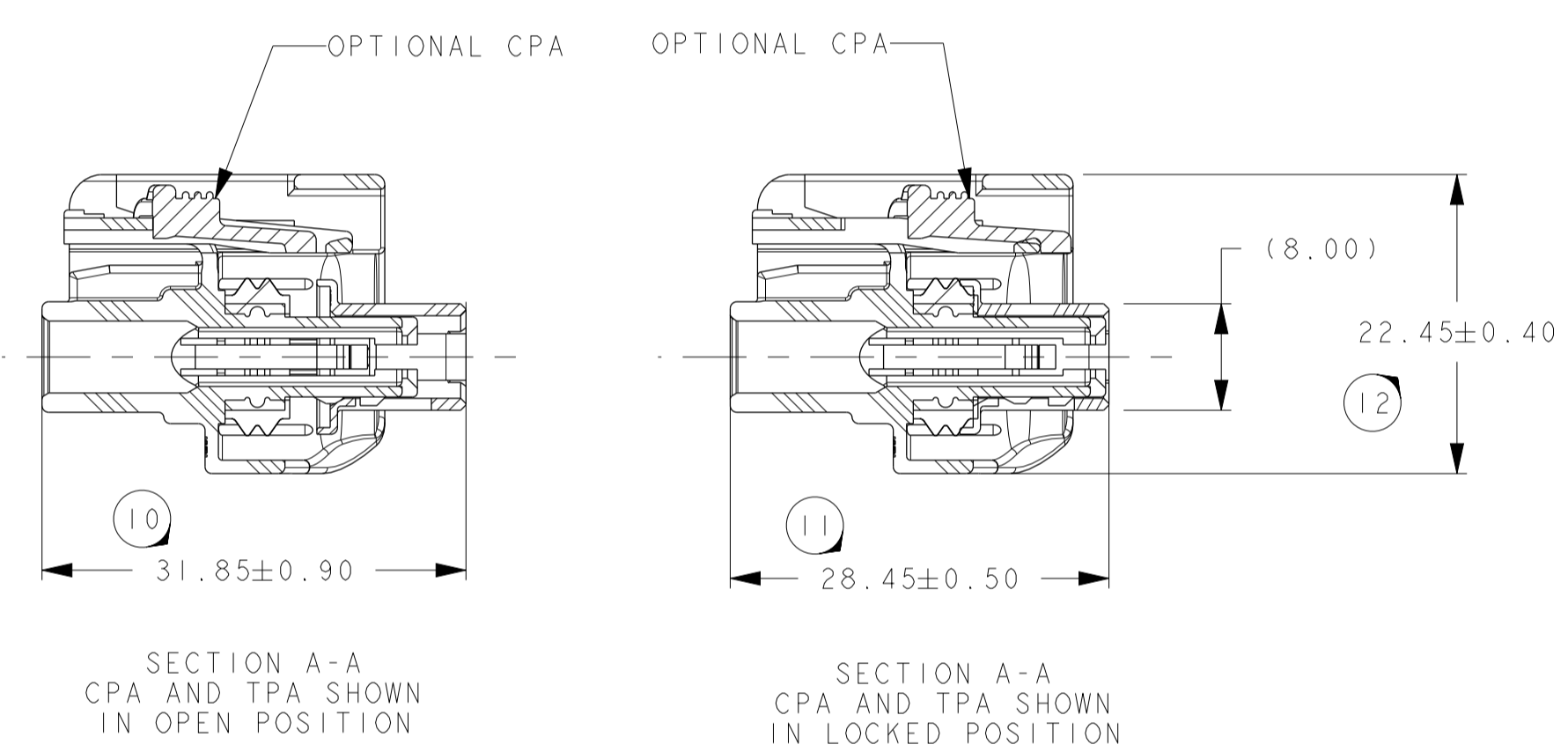


POLARIZATION OPTIONS

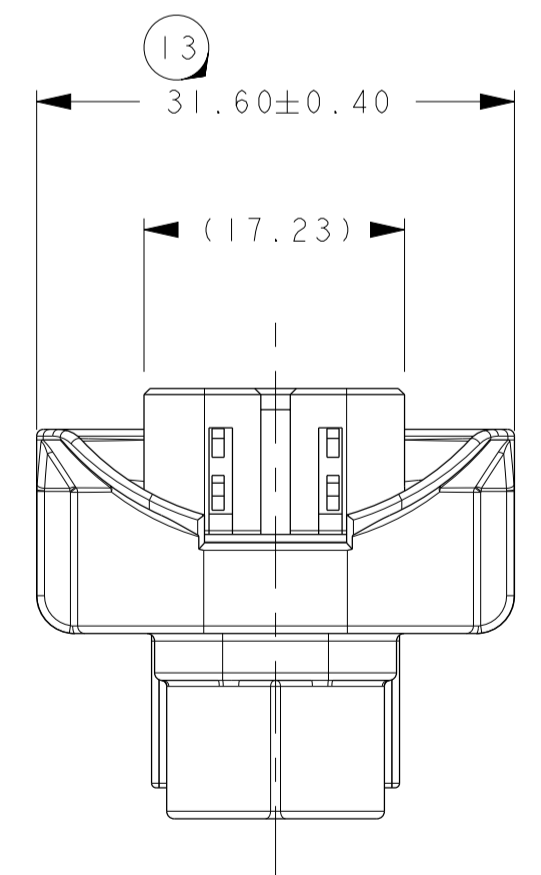
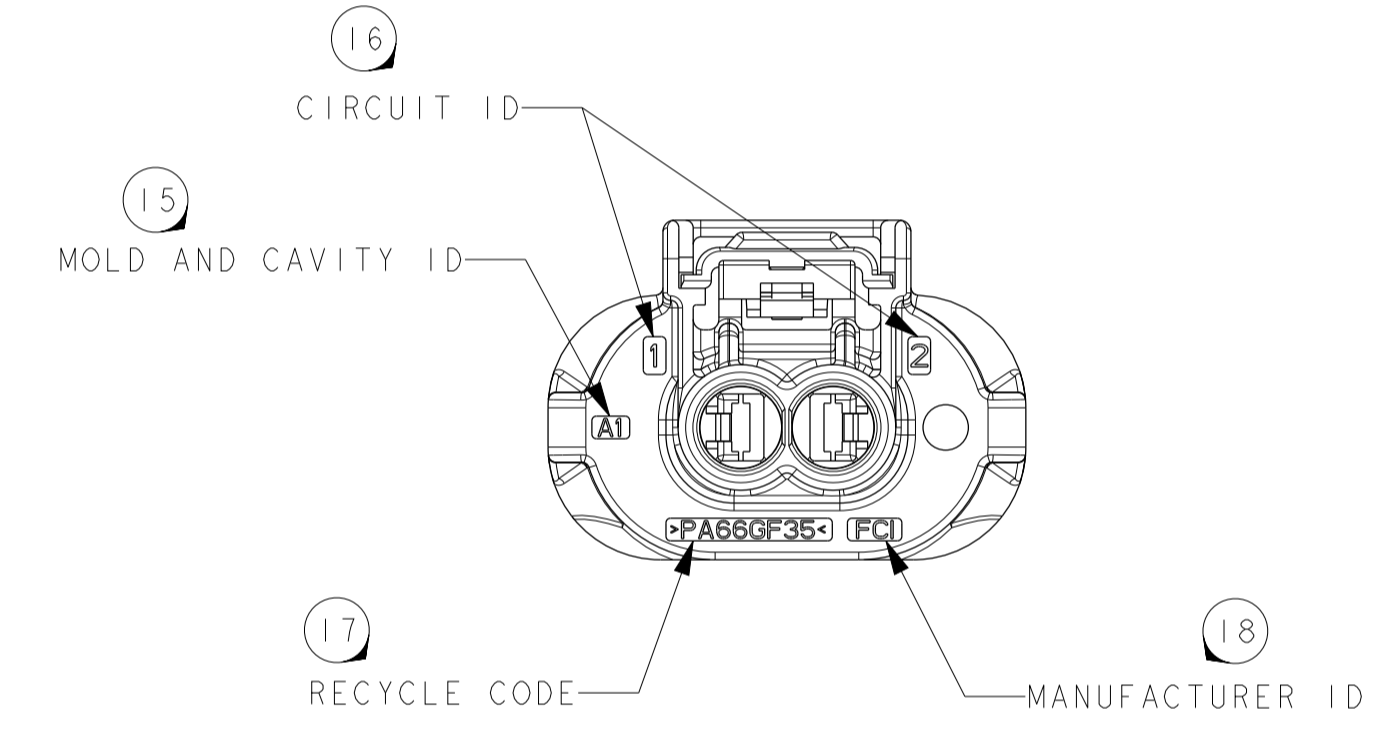
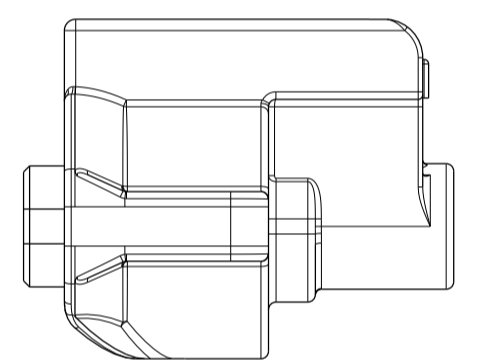
APPLICABLE COMPONENTS - SEE NOTE #1				
FCI PART NUMBER	ITEM DESCRIPTION	GRIP CODE	WIRE SIZE	WIRE INSULATION DIAMETER RANGE
54001410	FCI APEX 2.8 FEMALE TERMINAL GOLD	14AU	16/14 AWG 1.50-2.50mm ²	2.18mm-3.00mm
54001448	FCI APEX 2.8 FEMALE TERMINAL GOLD (FORD)	14AU	16/14 AWG 1.50-2.50mm ²	2.18mm-3.00mm
F576000	CABLE SEAL (BLUE)	-	16/14 AWG 1.50-2.00mm ²	2.20mm-2.80mm
60994034	CABLE SEAL (YELLOW)	-	2.50mm ²	2.70mm-3.00mm



SCALE 2:1

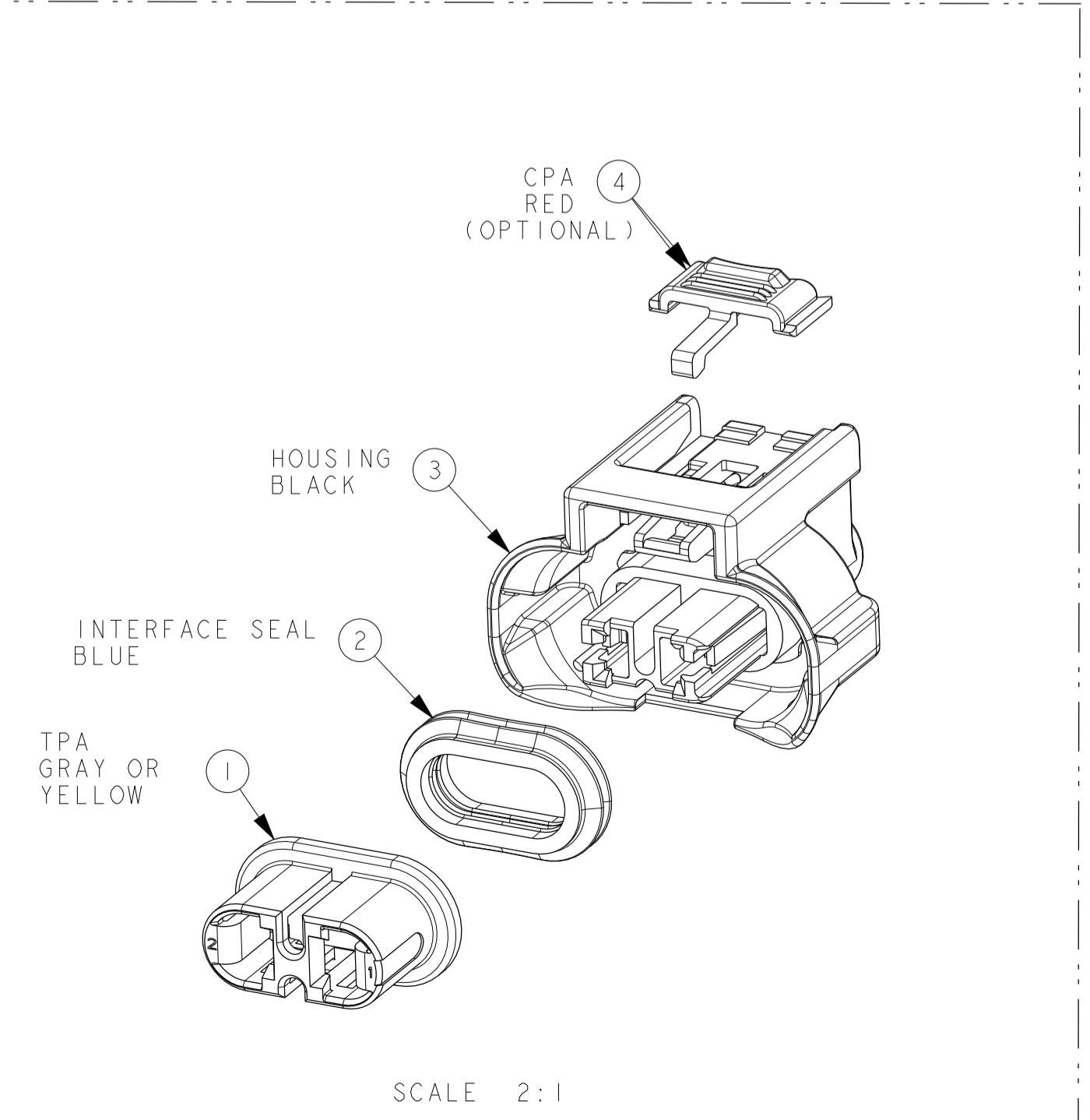


SCALE 2:1



SCALE 2:1

- NOTES UNLESS OTHERWISE SPECIFIED:
- BULB HEATING EFFECT IN LIGHTING APPLICATIONS MUST BE CONSIDERED BY THE SPECIFYING PARTY AS TO APPROPRIATE WIRE, CABLE SEAL, AND TERMINAL SELECTION AND FOR EACH LIGHTING SYSTEM'S VALIDATION TESTING. USE OF LARGEST CONDUCTOR WIRE WITH 150°C RATING IS STRONGLY RECOMMENDED IN ALL BULB OR OTHER SELF-HEATING APPLICATIONS.
 - TEST METHOD PER USCAR-2 REV 5 TESTED TO TEMPERATURE CLASS III (125°C) (BULB HEATING EFFECT NOT INCLUDED)
 - CONNECTOR TO BE USED WITH THE FOLLOWING RANGE OF WIRE SIZES AND TYPES:
 - WIRE SIZES: 1.50mm² - 2.50mm² AND 16 GAGE TO 14 GAGE.
 - OUTSIDE DIAMETER: 2.18mm MIN O.D. TO 3.00mm MAX O.D.
 - TYPE/STANDARD: MIL123-A, MS-8288, M3075, FLR2X
 CONTACT FCI ENGINEERING REGARDING USE OF OTHER WIRE SIZES OR TYPES. SEE NOTE #1.
 - SEE FCI DRAWING C15004-CUST FOR TERMINAL CRIMPING REQUIREMENTS.
 - ANNUAL QUALITY REQUIREMENTS: IT IS PERMISSIBLE TO PERFORM CONTINUOUS CONFORMANCE PER FCI SPECIFICATION AQA-001 INSTEAD OF ANNUAL LAYOUT AND ANNUAL PV REQUIREMENTS OF QS-9000 SECTION 2 AND SAE/USCAR-2.



SCALE 2:1

12-00438 CL CHART/CPA F72210 WAS 54200016		NOTES REVISED NOTE 1		CAD SYSTEM	
NOTES REVISED NOTE 4		AP CHART/REMOVED TERMINALS 54001811 & 54001879, REMOVED CABLE SEAL F676000		pro / eng.	
AP CHART/CORRECTED MINIMUM WIRE SIZE; 1.5mm ² WAS 1.0mm ²		VIEWS CORRECTED SEAL DEPICTION		DIMENSION IN MILLIMETERS	
11981 MIS ADD GM PART NUMBERS		AP CHART/ADD GRIP CODE AND WIRE SIZE COLUMNS		DWG SIZE	
NOTES REVISE NOTE 4		NOTES NOTES RENUMBERED AND REVISED		A1	
11633 F15,F13 31.85±0.90 was 31.15±0.90 , 28.45±0.50 was 27.75±0.50		AP CHART/APPLICABLE CABLE SEALS REVISED		SHEET	
11157 RELEASED FOR PRODUCTION (REV C)		RELEASED FOR PRODUCTION (REV C)		REV.	
ECN-NO.		ZONE		DRAWING NUMBER	
PRODUCT SPEC.		PACKAGING SPEC.		APPLICATION SPEC.	
TOLERANCES		MATERIAL		SURFACE FINISH	
±0.1		±0.2*		ECO Loc. C446 AN	
DO NOT MEASURE DRAWING		COLOUR		DRAWING NUMBER	
DATE		NAME		REV.	
2008/02/08		Robert		PCC0558541	
2013/06/11		Mehi MAJID		STATE	
2013/06/11		Robert BAUMAN		PART NUMBER	
2013/06/11		Frank HOLUB		REV.	
PCC0558541		DOCUMENT UNDER PDS CONTROL, NO MODIFICATION ALLOWED OUTSIDE		See Table	
2 WAY FEMALE 28 APEX CONNECTOR		PGJ 19 LAMP CONNECTOR		SCALE 4:1	

EUR CON 112 FEB 05S