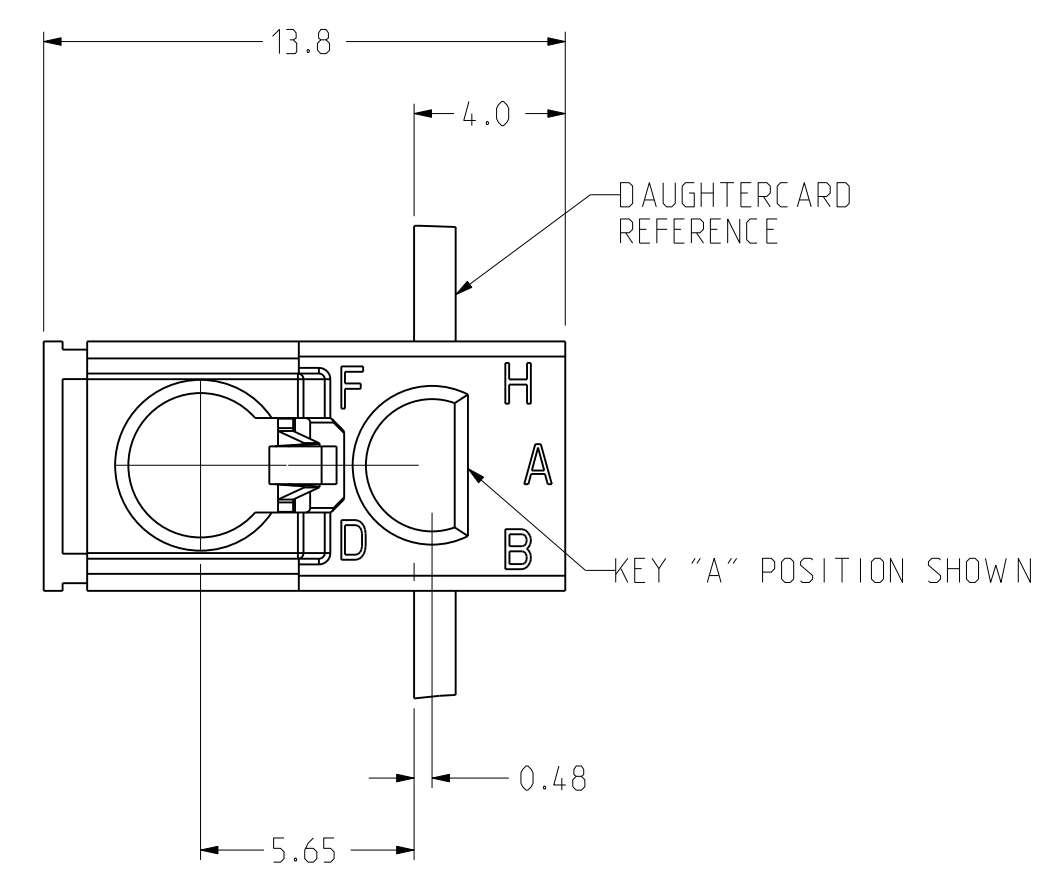
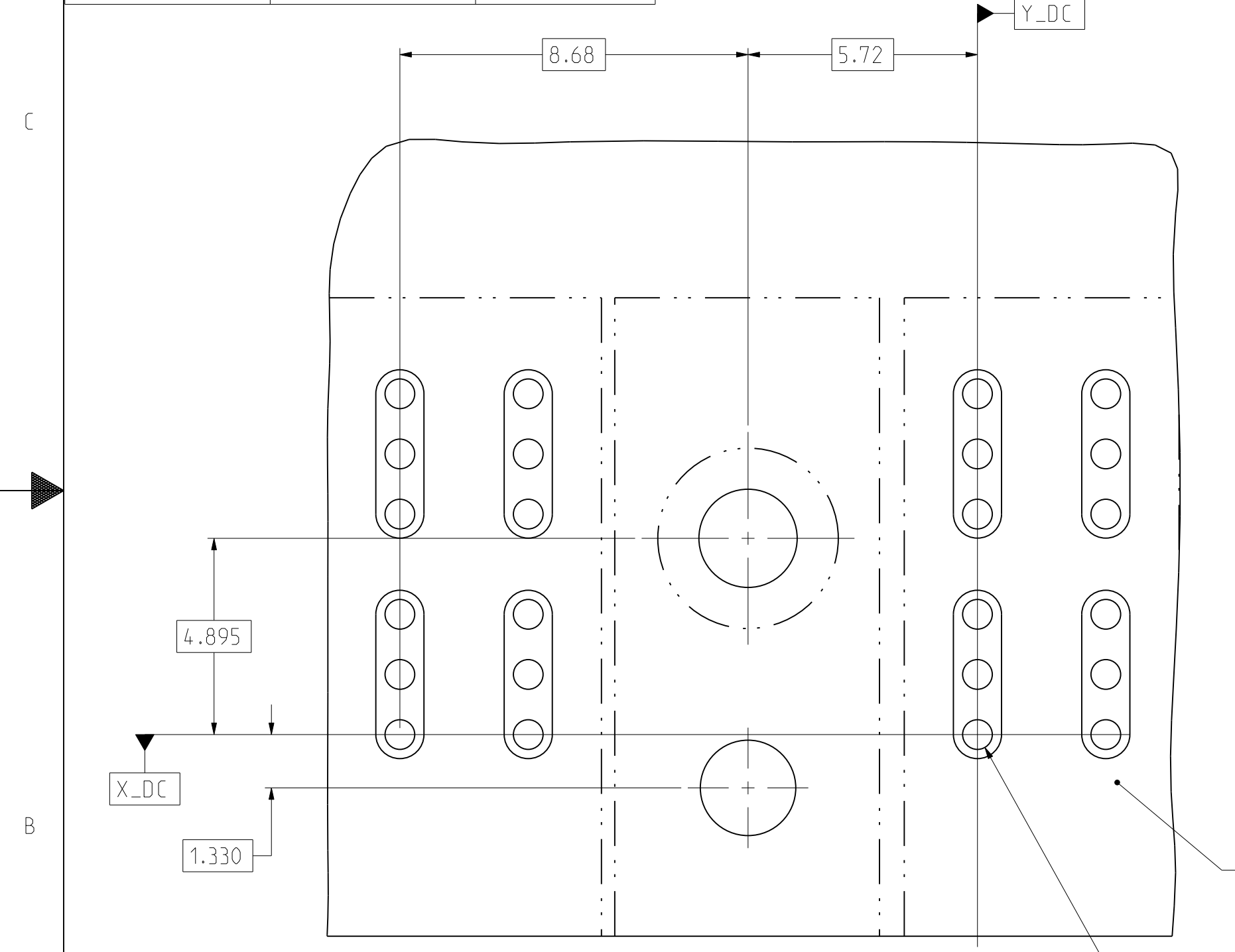
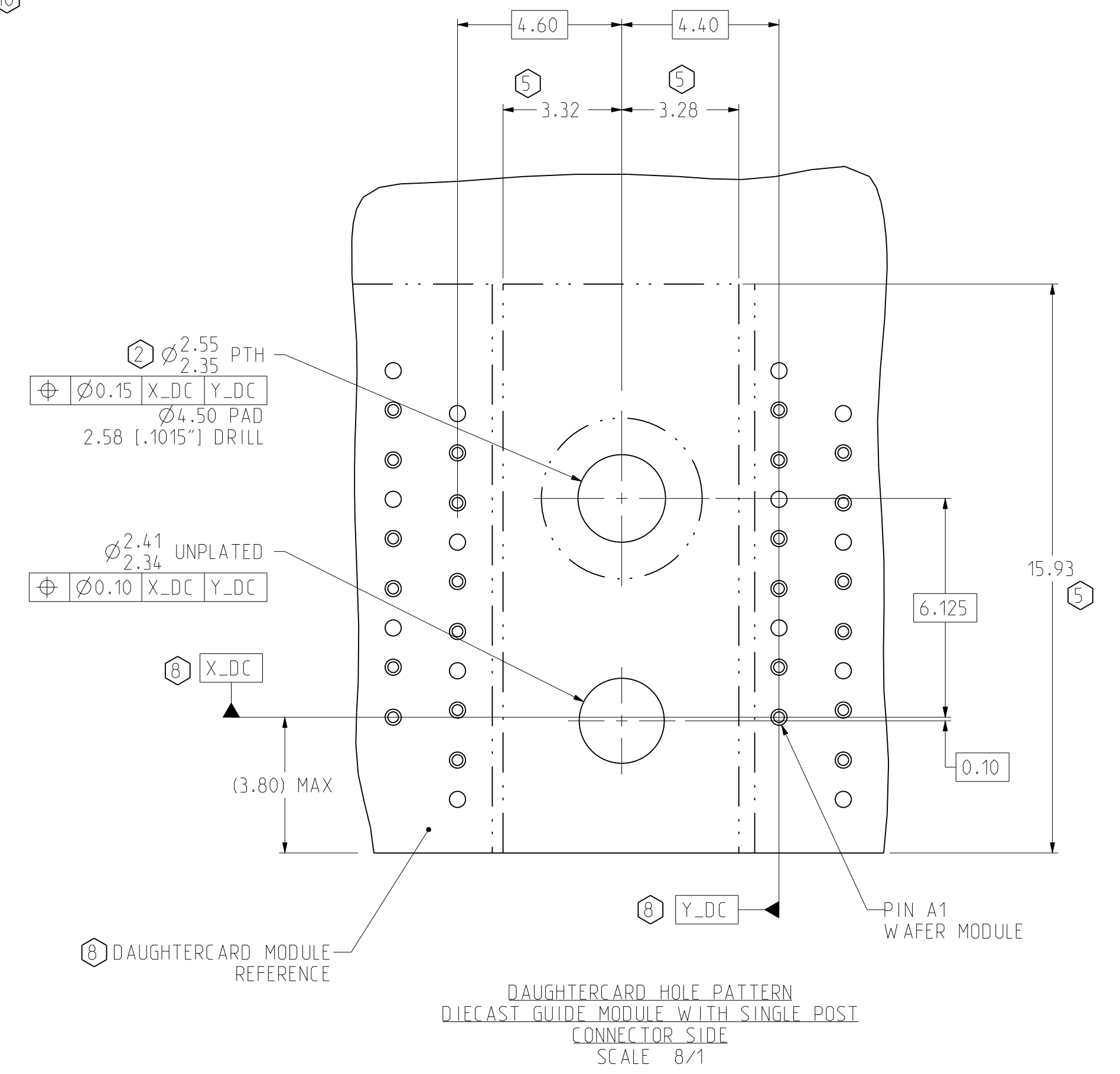
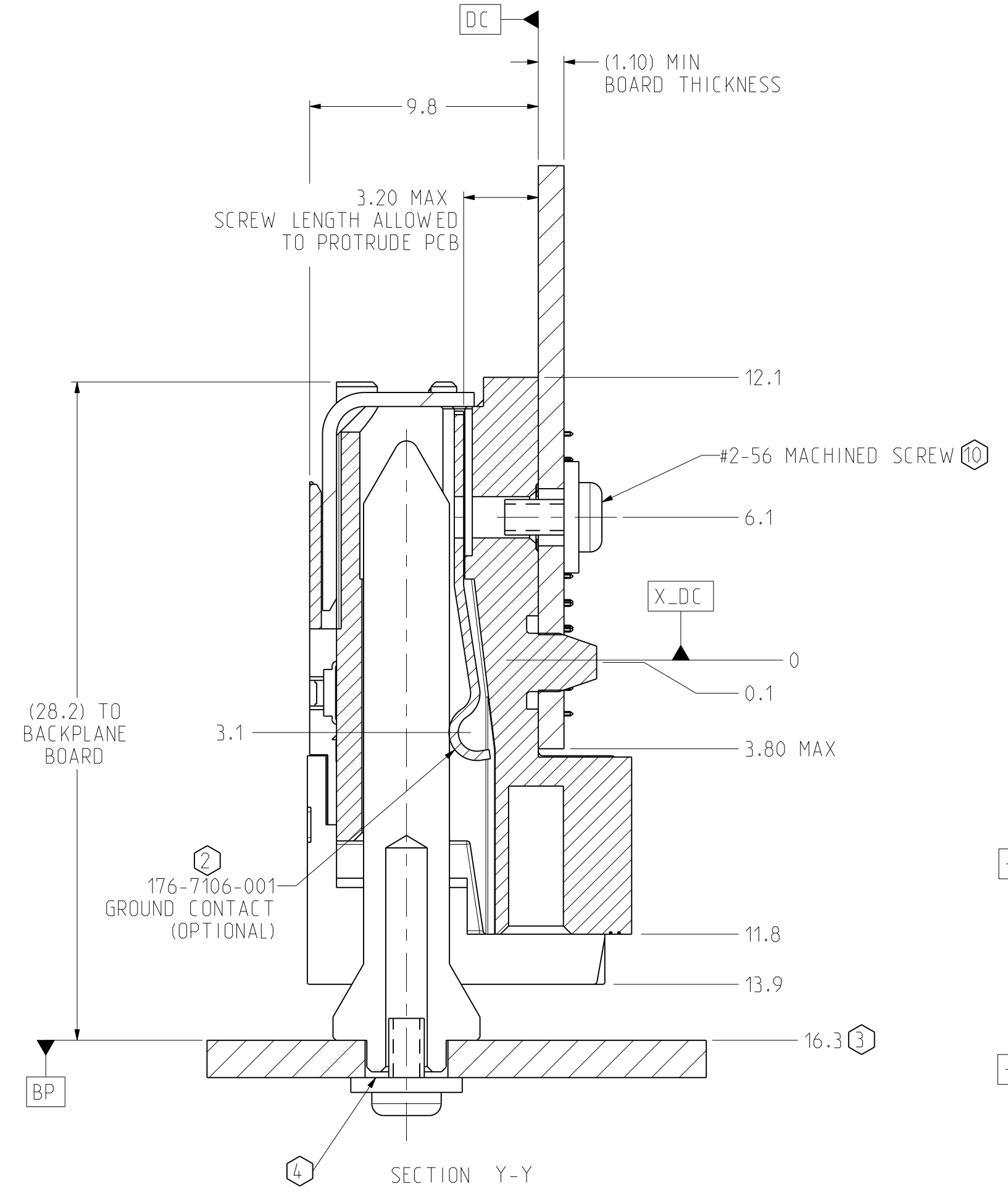
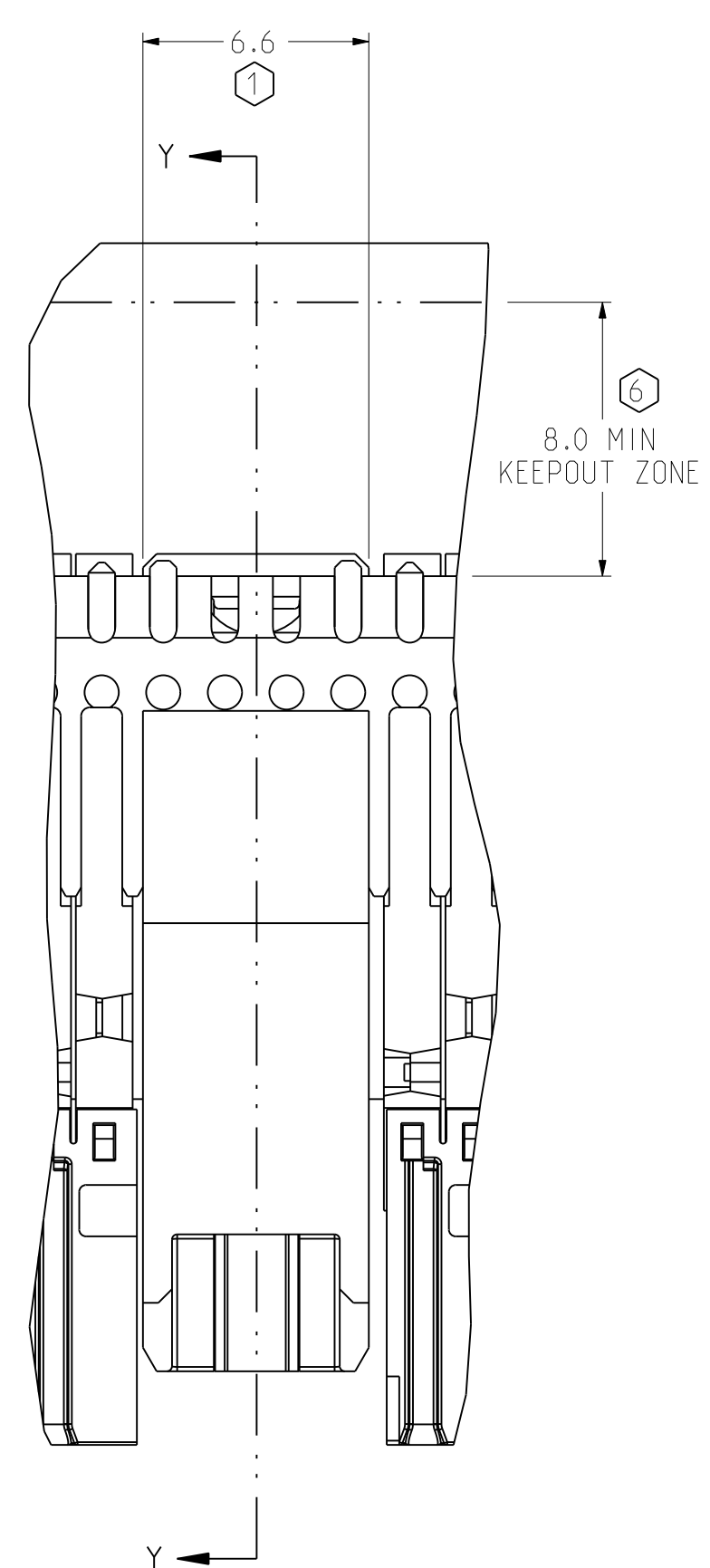


ZONE	REV	SCR NUMBER	DESCRIPTION	BY	DATE	APPROVED
ALL	A	MHAN-9H6LB3.VER01	NEW RELEASE	HCL-VK	03/26/2014	M.HANRAHAN

TABLE 1

PART NUMBER	GROUND CONTACT	KEY POSITION
970-301A-DOB	YES	A
970-301B-DOB	YES	B
970-301C-DOB	YES	C
970-301D-DOB	YES	D
970-301E-DOB	YES	E
970-301F-DOB	YES	F
970-301G-DOB	YES	G
970-301H-DOB	YES	H
970-301Y-DOB	YES	NO KEY
970-301A-DOA	NO	A
970-301B-DOA	NO	B
970-301C-DOA	NO	C
970-301D-DOA	NO	D
970-301E-DOA	NO	E
970-301F-DOA	NO	F
970-301G-DOA	NO	G
970-301H-DOA	NO	H
970-301Y-DOA	NO	NO KEY
970-301Y-D2B	YES	NO KEY WITH 2 POST
970-301Y-D2A	NO	NO KEY WITH 2 POST



- NOTES:
- USE 6.6 NOMINAL FOR DAUGHTERCARD LAYOUT.
 - PLATED THROUGH HOLE TO CONNECT TO CHASSIS FOR FIRST MATE GROUND OPTION THROUGH GUIDE PIN. SEE TB-2237 FOR ROUTING GUIDELINES. USE UNPLATED THROUGH HOLE FOR UNGROUNDED MODULE.
 - NOMINAL DIMENSION FOR FULLY SEATED CONNECTOR.
 - FOR MATING GUIDE PIN DETAIL AND LOCATION. SEE: DRAWING C914-3000-000 FOR STANDALONE GUIDE PIN OR DRAWING C914-3010-000 FOR MODULE MOUNTED GUIDE PIN.
 - NO SURFACE TRACES IN KEEP-OUT ZONE.
 - FOR CONNECTOR REPAIRABILITY. USE KEEP OUT ZONE.
 - SEE TB-XXXX FOR BOARD WEIGHT LIMITATIONS.
 - REFER TO C922-3XXX-500 FOR SIGNAL CONNECTOR DETAIL.
 - REFER TO TB-2235 FOR Xcede HD PRODUCT SPECIFICATIONS.
 - SCREW LENGTH AND PART NUMBER ARE DEPENDENT ON DAUGHTERCARD THICKNESS (AS SPECIFIED FROM CONFIGURATOR).

TOLERANCES		DESIGN 06/15/2011	<p>Amphenol TCS A Division of Amphenol Corporation 200 Innovative Way, Nashua, NH 03082 603.878.3000</p>	<p>TITLE DAUGHTERCARD DIECAST GUIDE MODULE XCede HD 3 PAIR GEN 2</p>
0.0	±0.25	T.DO		
0.00	±0.13	HCL-MH		
0.000	±	T.DO		
ANGLES	± 3°	APVD 06/22/2011	<p>PART NO. SEE TABLE 1</p>	<p>REV N/A</p>
UNLESS OTHERWISE SPECIFIED DIMENSIONS ARE IN MM. DECIMAL MARKER IS A PERIOD.			<p>DRAWING NO. C-970-301A-D50</p>	<p>ASSEM C970-301A-500 1.1 DRAWING C970-301A-D50 A.1</p>
<p>INTERPRET PER ASME Y14.5M CODE IDENT 31413</p>			<p>CUSTOMER USE DRAWING</p>	
SIZE D	SCALE 5/1	SHEET 1 OF 2		

DRW NO. C-970-301A-D50

SH 1 REV A

8

7

6

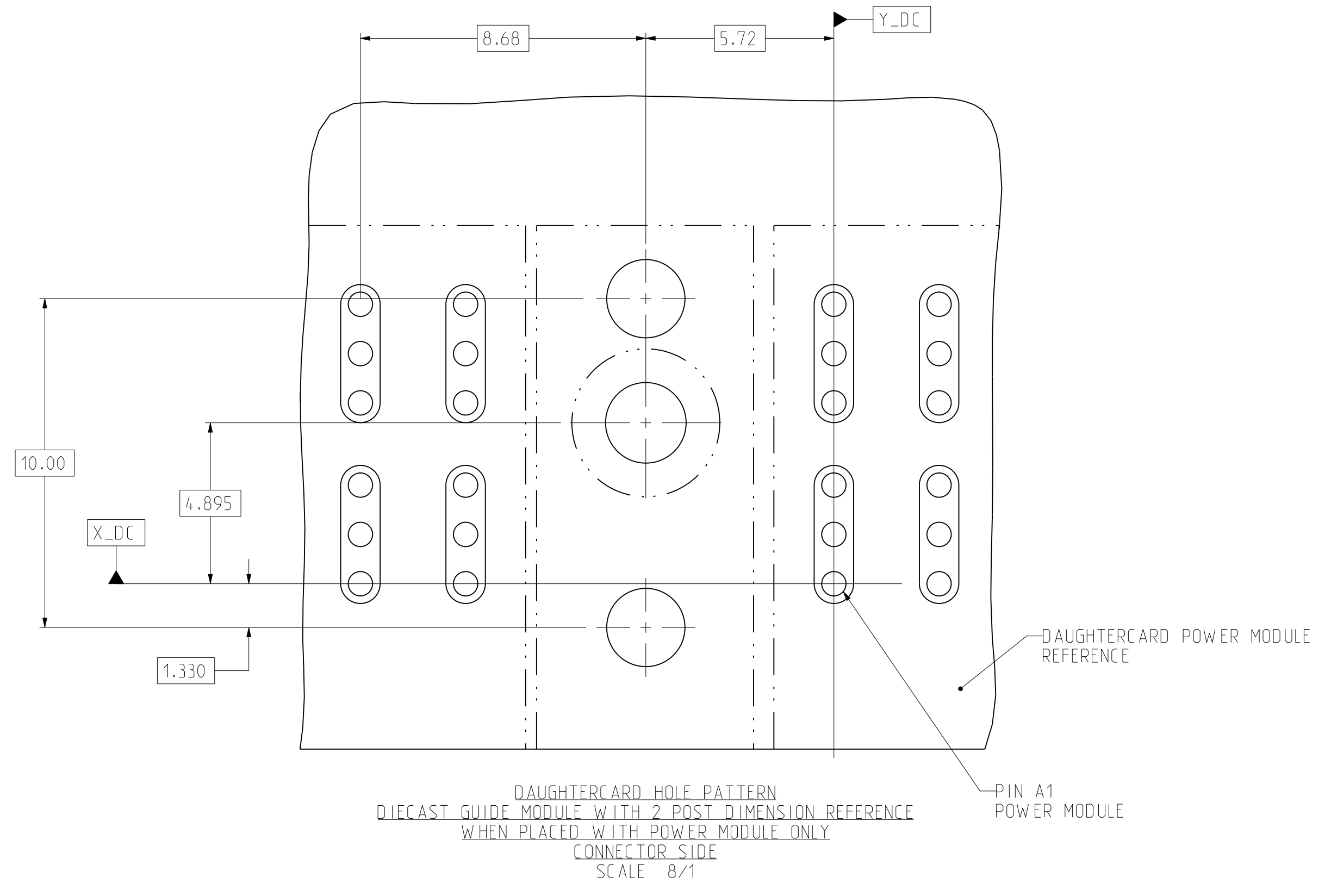
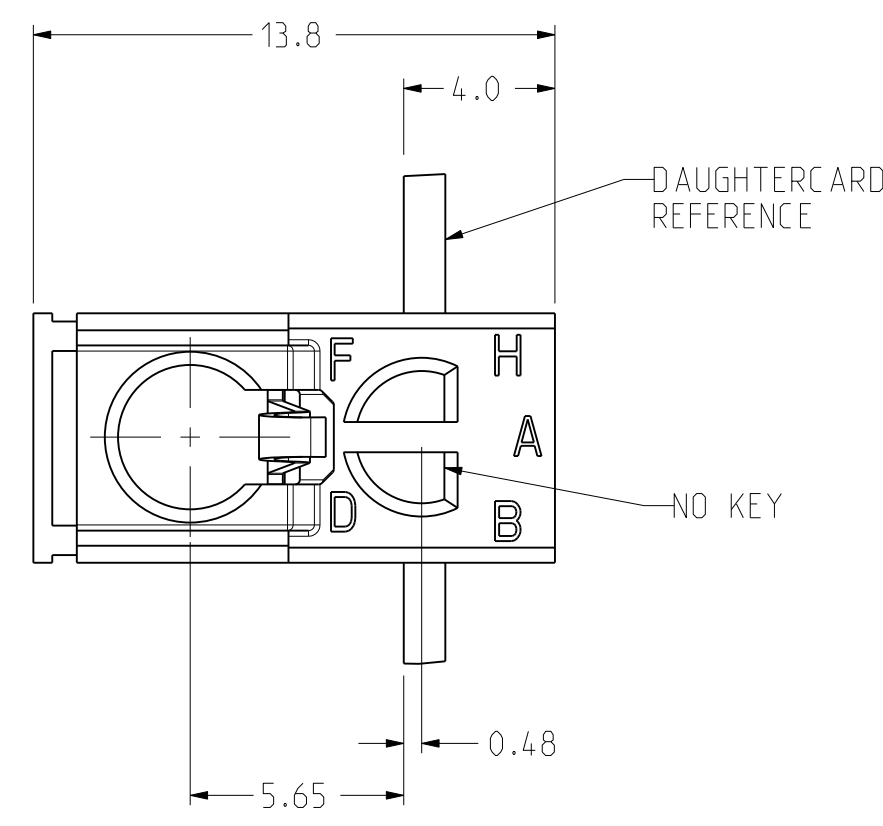
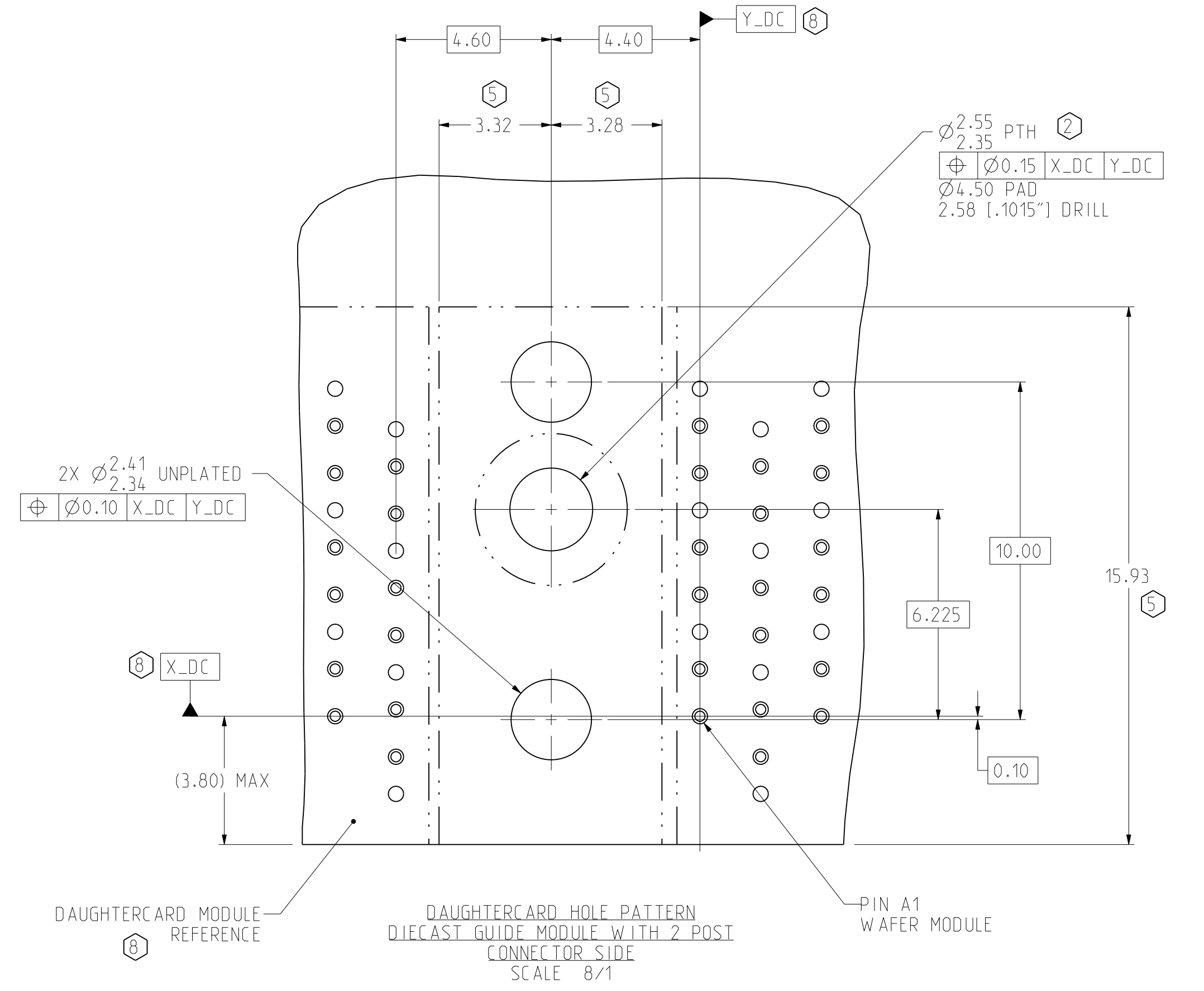
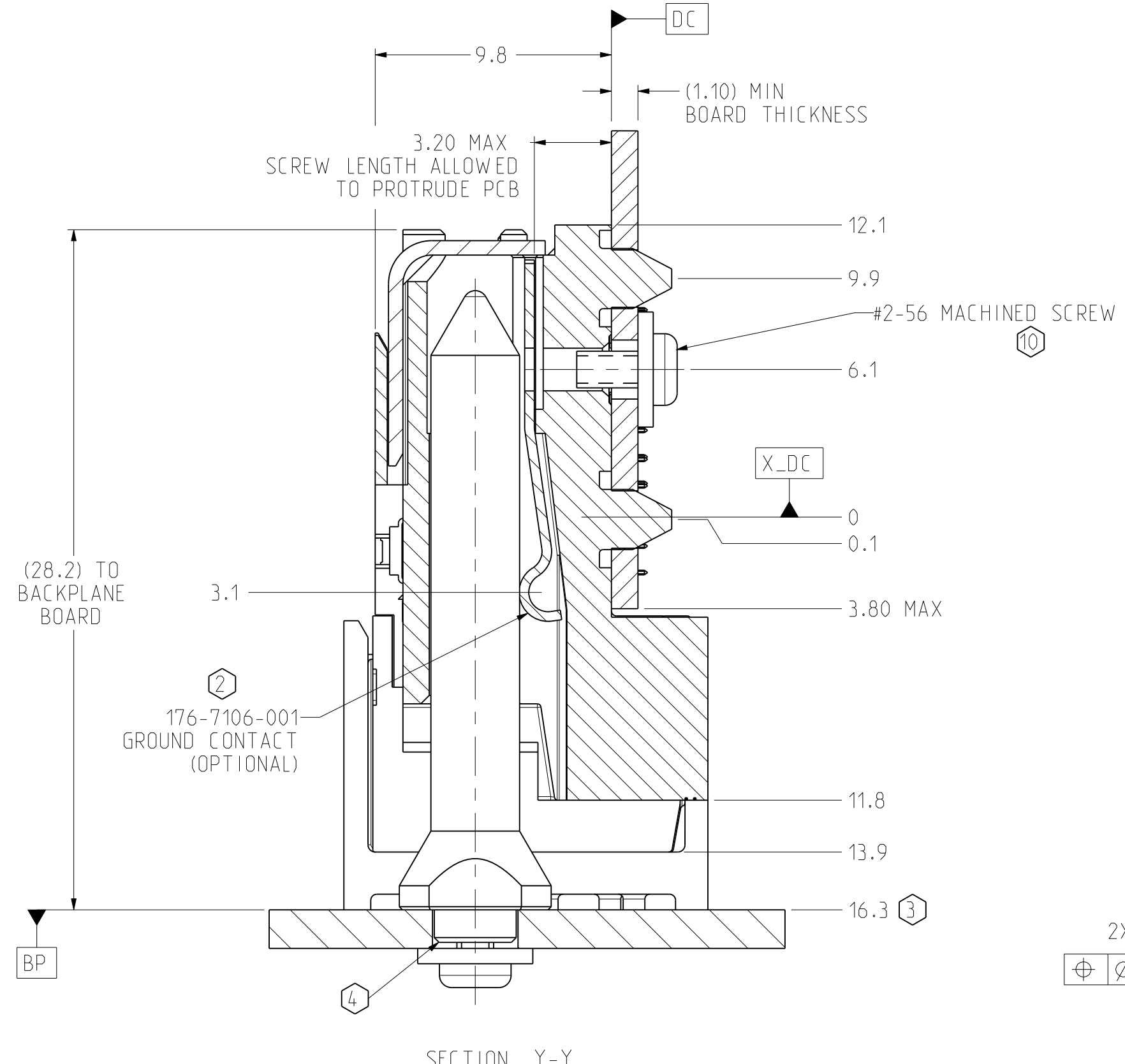
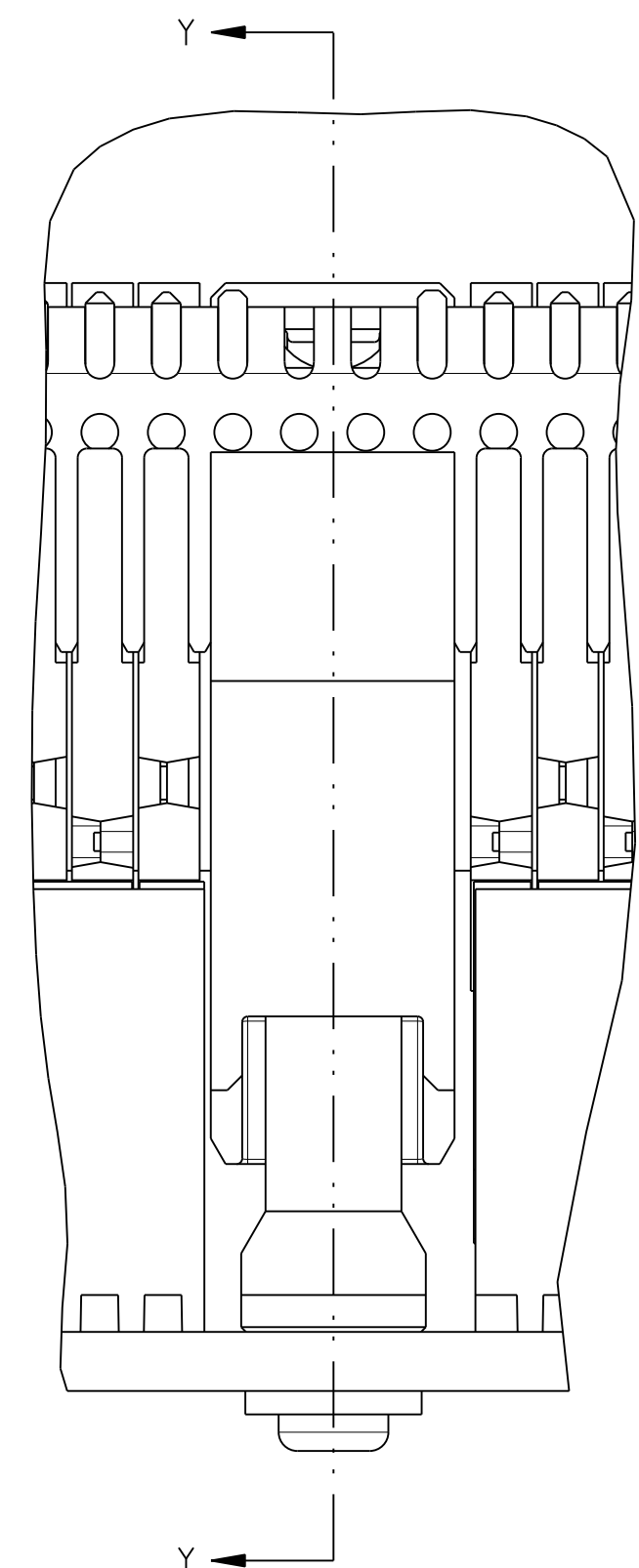
5

4

3

DRW NO.	C-970-301A-D50	SH	2	REV	A
---------	----------------	----	---	-----	---

ZONE	REV	SCR NUMBER	DESCRIPTION	BY	DATE	APPROVED
			SEE SHEET 1			



TOLERANCES		DESIGN 06/15/2011	T.D.O	Amphenol TCS A Division of Amphenol Corporation 200 Innovative Way, Nashua, NH 03082 603.879.3000	TITLE DAUGHTERCARD DIECAST GUIDE MODULE XCede HD 3 PAIR GEN 2	PART NO. SEE TABLE 1	REV
0.0	±0.25	DRAWN 06/22/2011	HCL-MH				2
0.00	±0.13	CHK 06/22/2011	T.D.O				A
0.000	± -	APVD 06/22/2011	T.D.O				
ANGLES ± 3°		UNLESS OTHERWISE SPECIFIED DIMENSIONS ARE IN MM. DECIMAL MARKER IS A PERIOD.		REV	N/A		
DRAWING NO.		C-970-301A-D50		REV	A		
ASSEMBLY		ASSEM C970-301A-500		SCALE	5/1	SHEET 2 OF 2	
DRAWING		DRAWING C970-301A-D50		SIZE	D		

INTERPRET PER ASME Y14.5M
CODE IDENT 31413

CUSTOMER USE
DRAWING

DRW NO.
C-970-301A-D50

SH
2

REV
A