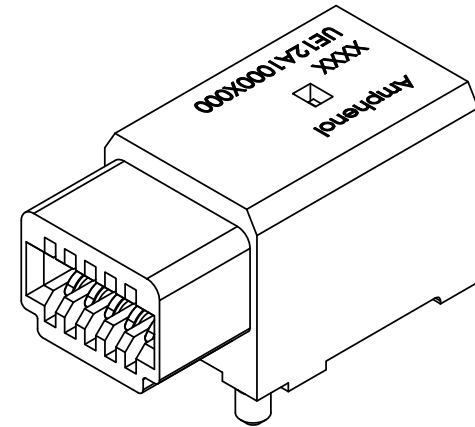
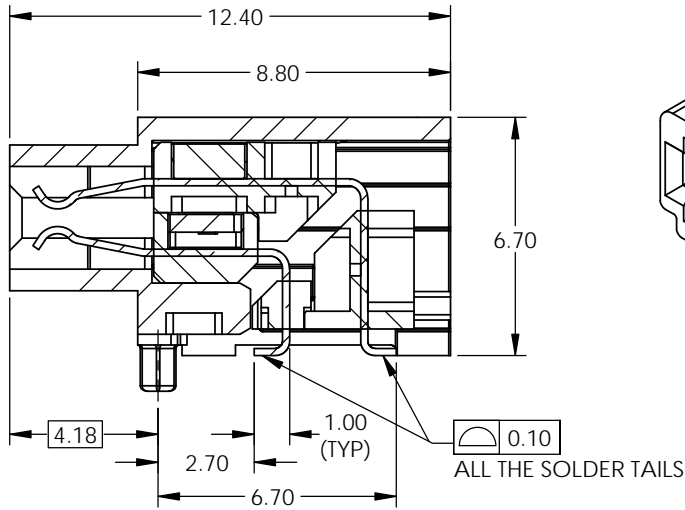
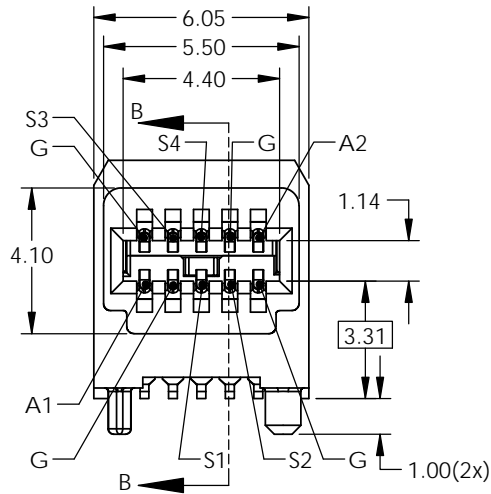


| REVISIONS |     |                                      |           |          |
|-----------|-----|--------------------------------------|-----------|----------|
| REV.      | ECN | DESCRIPTION                          | DATE      | APPROVED |
| C         |     | UPDATED DRAWING                      | NOV21/15  |          |
| D         |     | FOOTPRINTS UPDATED                   | DEC11/15  |          |
| E         |     | DEFINED THE KEEPOUT & PIN ASSIGNMENT | JAN 27/16 | J.SI     |



MATERIAL:  
CONNECTOR - SMT  
PLASTIC HOUSING:  
LCP, FLAMMABILITY RATING UL94-V0  
CONTACT:  
PHOSPHOR BRONZE  
PLATING: SEE AMPHENOL PART  
NUMBER  
PACKAGING: TAPE AND REEL  
TEMPERATURE RANGE: -40°C TO +85°C

**AMPHENOL PART NUMBER CONFIGURATION**  
UE12 - A 1 0 0 0 - X 0 0 0 T

**PACKAGING**  
T = TAPE AND REEL PACKAGING

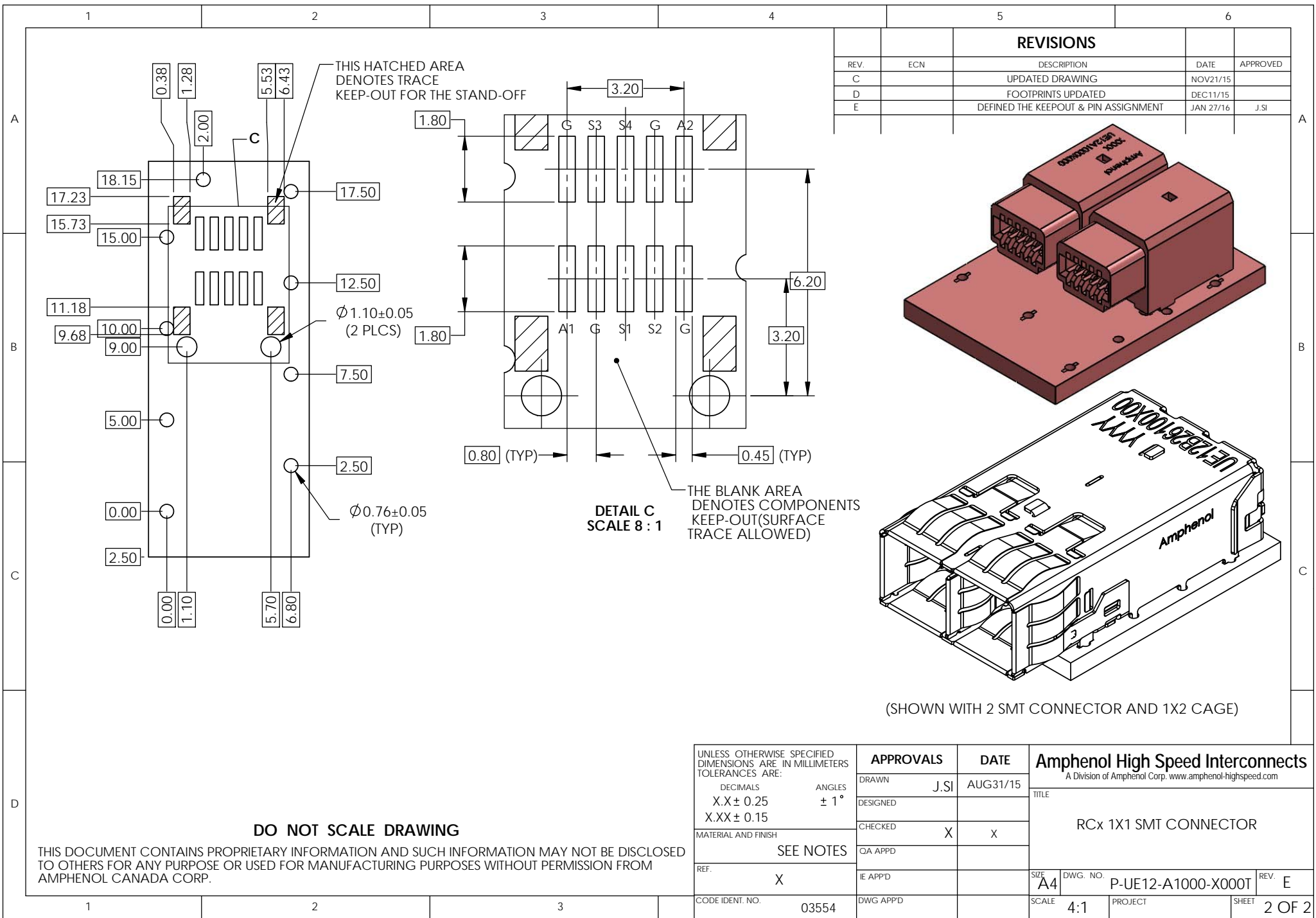
**PLATING**  
3 = 0.76um GOLD AT MATING AREA  
2.54-7.62um MATTE TIN IN  
TERMINATION  
6 = 0.38um GOLD AT MATING AREA  
2.54-7.62um MATTE TIN IN  
TERMINATION



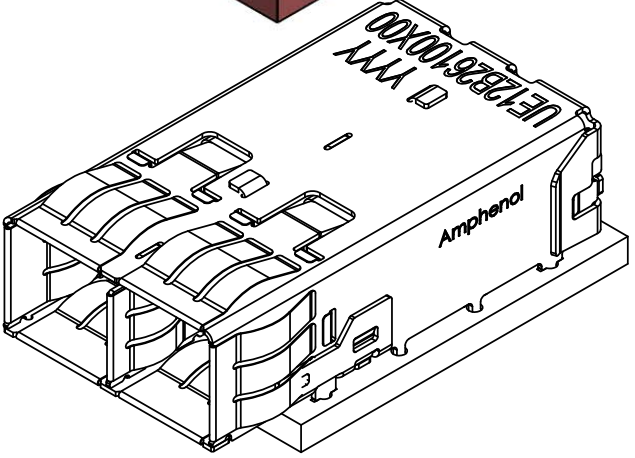
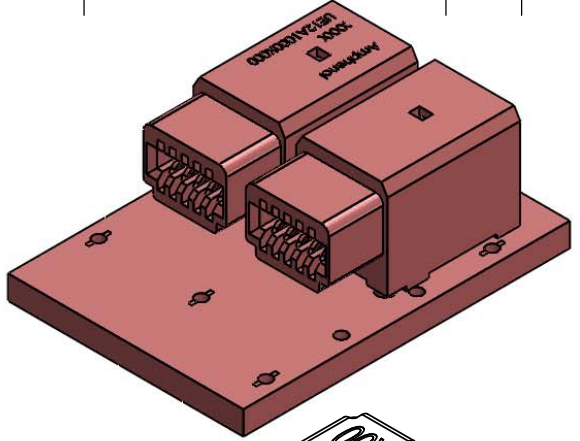
**DO NOT SCALE DRAWING**

THIS DOCUMENT CONTAINS PROPRIETARY INFORMATION AND SUCH INFORMATION MAY NOT BE DISCLOSED TO OTHERS FOR ANY PURPOSE OR USED FOR MANUFACTURING PURPOSES WITHOUT PERMISSION FROM AMPHENOL CANADA CORP.

|  |                  |             |   |
|--|------------------|-------------|---|
| UNLESS OTHERWISE SPECIFIED DIMENSIONS ARE IN MILLIMETERS TOLERANCES ARE:<br>DECIMALS X.X ± 0.25<br>X.XX ± 0.15<br>MATERIAL AND FINISH SEE NOTES<br>REF. X<br>CODE IDENT. NO. 03554 | <b>APPROVALS</b> | <b>DATE</b> | <b>Amphenol High Speed Interconnects</b><br>A Division of Amphenol Corp. www.amphenol-highspeed.com<br><br>TITLE<br>RCx 1X1 SMT CONNECTOR<br><br>SIZE A4 DWG. NO. P-UE12-A1000-X000T REV. E<br>SCALE 5:1 PROJECT SHEET 1 OF 2 |
|  | DRAWN J.SI       | AUG31/15    |   |
|  | DESIGNED         |             |   |
|  | CHECKED X        | X           |   |
|  | QA APPD          |             |   |
|  | IE APPD          |             |   |
|  | DWG APPD         |             |   |



| REVISIONS |     |                                       |           |          |
|-----------|-----|---------------------------------------|-----------|----------|
| REV.      | ECN | DESCRIPTION                           | DATE      | APPROVED |
| C         |     | UPDATED DRAWING                       | NOV21/15  |          |
| D         |     | FOOTPRINTS UPDATED                    | DEC11/15  |          |
| E         |     | DEFINED THE KEEP-OUT & PIN ASSIGNMENT | JAN 27/16 | J.SI     |



(SHOWN WITH 2 SMT CONNECTOR AND 1X2 CAGE)

|  |        |                  |      |             |                                       |   |                    |
|--|--------|------------------|------|-------------|---------------------------------------|---|--------------------|
| UNLESS OTHERWISE SPECIFIED DIMENSIONS ARE IN MILLIMETERS TOLERANCES ARE: |        | <b>APPROVALS</b> |      | <b>DATE</b> |                                       | <b>Amphenol High Speed Interconnects</b><br>A Division of Amphenol Corp. www.amphenol-highspeed.com |                    |
| DECIMALS   | ANGLES | DRAWN            | J.SI | AUG31/15    | TITLE<br><b>RCx 1X1 SMT CONNECTOR</b> |   |                    |
| X.X ± 0.25   | ± 1°   | DESIGNED         |      |             |                                       |   |                    |
| X.XX ± 0.15  |        | CHECKED          | X    | X           |                                       |   |                    |
| MATERIAL AND FINISH  |        | QA APPD          |      |             |                                       |   |                    |
| SEE NOTES  |        | IE APPD          |      |             | SIZE<br><b>A4</b>                     | DWG. NO.  | P-UE12-A1000-X000T |
| REF.   | X      | DWG APPD         |      |             | SCALE                                 | 4:1   | PROJECT            |
| CODE IDENT. NO.  | 03554  |                  |      |             | SHEET                                 | 2 OF 2  |                    |

**DO NOT SCALE DRAWING**

THIS DOCUMENT CONTAINS PROPRIETARY INFORMATION AND SUCH INFORMATION MAY NOT BE DISCLOSED TO OTHERS FOR ANY PURPOSE OR USED FOR MANUFACTURING PURPOSES WITHOUT PERMISSION FROM AMPHENOL CANADA CORP.