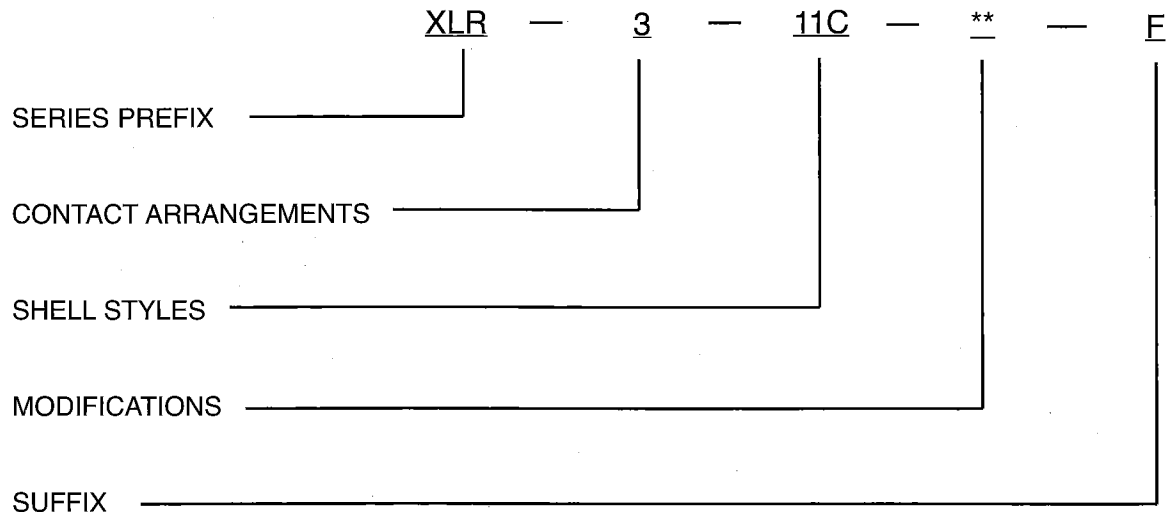


XLR Part Number Selection Guide



CONNECTOR SERIES

XLR

CONTACT ARRANGEMENTS

See below 2A, 3, 4, 5, 6, 6A, 7

SHELL STYLE

- 11C - Female Plug
- 12C - Male Plug
- 13 - Female Round Flange Receptacle
- 14 - Male Round Flange Receptacle
- 31 - Female Rectangular Flange Receptacle
- 32 - Male Rectangular Flange Receptacle

MODIFICATIONS

- F77 - Rectangular Small Flange (Receptacle 31 and 32)
- F512 - Rectangular Mini-Flange (Receptacle 32 only)
- A176 - Gold plated contacts (for 2-6 pins)
- * 7 pins are gold plated contacts as standard,-A176 not necessary
- **Black shell available, contact factory

SUFFIX

- P/N's XLR-3-11-11, XLR-3-12-12 assigned for Bulkhead Adapters only
- "F" to identify lead free products.
- XLR series products are RoHS compliant.

Number of Contacts	2	3	4	5	6	7	
Contact Arrangement Configuration (Engaging View Pin Insert)	2A	3	4	5	6	6A	7
Wire AWG Max	#14	#14	#16	#18	#18	#18	#20
Wire Cross Section Max	2.1mm ²	2.1mm ²	1.3mm ²	0.8mm ²	0.8mm ²	0.8mm ²	0.5mm ²

Series Variations

Series/Shell Styles	Contact Arrangement						
	2A	3	4	5	6	6A	7
11C	★	★	★	★	★	★	★
12C	★	★	★	★	★	★	★
13	★	★	★	★	★	★	★
14	★	★	★	★	★	★	★
XLR 31	★	★	★	★	★	★	★
32	★	★	★	★	★	★	★
31-F77	★	★	★	★	★	★	★
32-F77	★	★	★	★	★	★	★
32-F512	★	★	★	★	★	★	★

Shell Styles

Female Plug	Type
	11C
Male Plug	Type
	12C
Female Flange Receptacle	Type
	13
	31
	31-F77
Male Flange Receptacle	Type
	14
	32
	32-F77
	32-F512

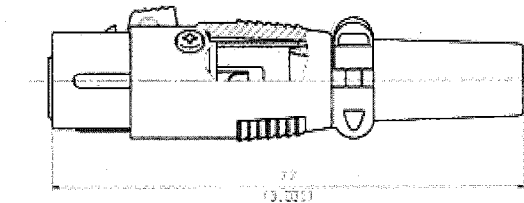
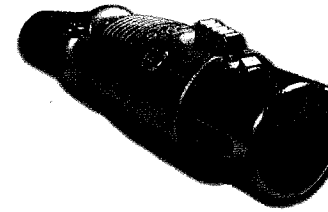
Dimensions shown in mm (inch)
Specifications and dimensions subject to change
www.ittcannon.com



XLR Plugs

Female Plug

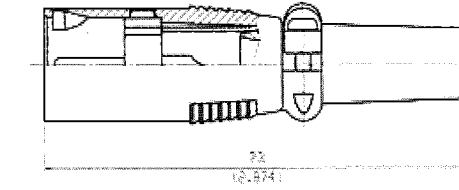
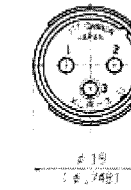
XLR-**-11C



See page 13 for assembly instructions

Male Plug

XLR-**-12C

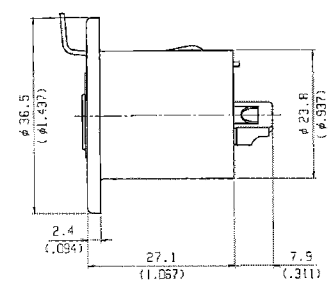
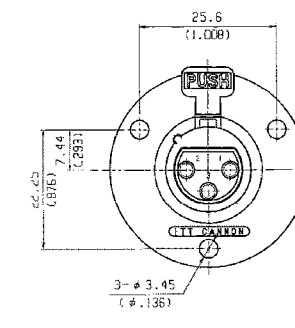
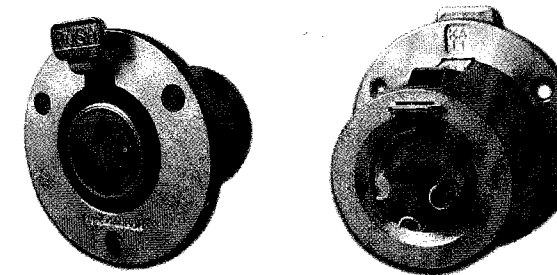


See page 13 for assembly instructions

Receptacles

Female Round Flange Receptacle

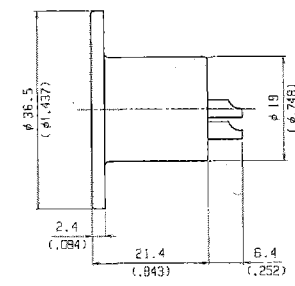
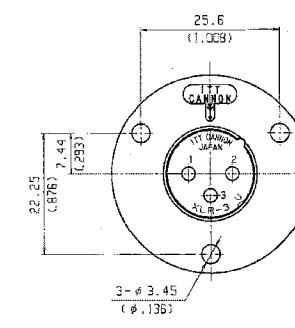
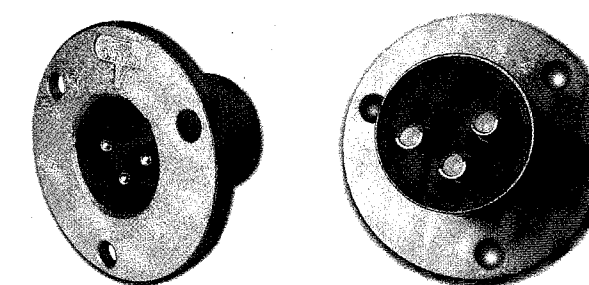
XLR-**-13



See page 15 for panel cutouts.
See Page 22 for latch lever assembly/removal instructions.

Male Round Flange Receptacle

XLR-**-14



See page 15 for panel cutouts.

Dimensions shown in mm (inch)
Specifications and dimensions subject to change
www.ittcannon.com

