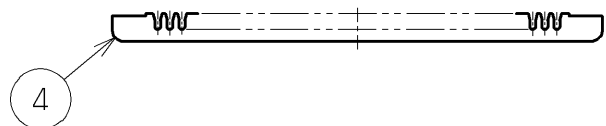
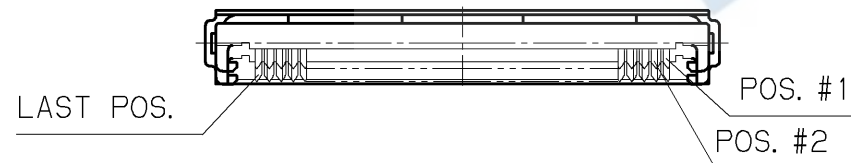
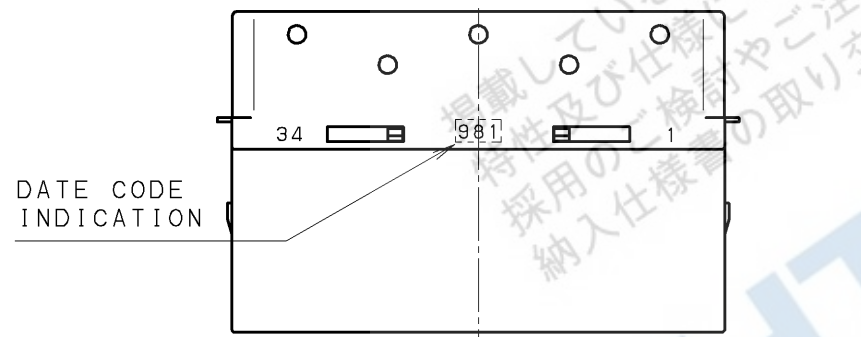
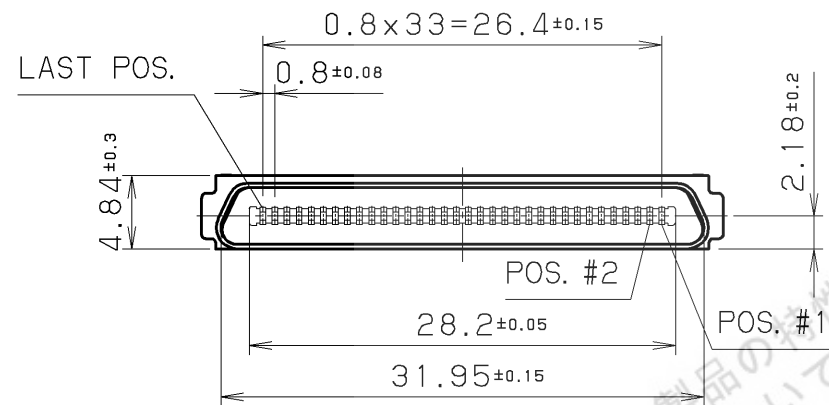


CONTACT DETAIL  
(5/1)



- NOTE1. CONTACT PLATING  
 CONTACT AREA : Pd/Ni 0.5μm+GOLD 0.1μmMIN.  
 TERMINAL AREA : GOLD 0.05μm  
 ALL OVER NICKEL UNDERPLATED
2. APPLICABLE CABLE COVER: P/N: HDRA-E68LGKPC  
 3. MATING CONNECTOR: P/N: HDRA-E68LFDT-SL  
 4. APPLICABLE WIRE SIZE AWG#30 (1/0.254)  
 Ø0.58 (CORE JACKET O. D.)

					4	CABLE HOUSING	PBT (GF)	2		UL94V-0 BROWN	
					3	SHELL	STEEL	1	NICKEL		
					2	INSULATOR	PBT (GF)	1		UL94V-0 BROWN	
	May 15 2013	M. K	Revised.		1	CONTACT	PHOSPHOR BRONZE	68	SEE NOTE 1		
LTR.	DATE	BY	REV.	DESCRIPT	No.	PART NAME	MATERIAL	QTY	FINISH	NOTE	
DATE		SCALE		UNIT		3RD. A. P		HTK HONDA TSUSHIN KOGYO CO., LTD.			
July. 18, 2006		2 / 1		mm (INCH)					NAME	0.8mm SPACING 68POS. FOR CABLE IDC MALE CONNECTOR	
APP. DATE&REV.		DR.		DE.		CHK.		CHK.		APP.	
		M. KASAHARA		M. KASAHARA						Y. KATO	
										PART NO.	HDRA-E68M1+
										REV.	1 A