

TABLE 1

PART NO.	TYPE OF TERMINAL	PLATING	APPLICABLE WIRE		CRIMPING TOOLS PART NO.
			CORE WIRE	INSULATION DIA. RANGE	
HKP-F103	STRIP FORM TERMINAL	WHOLE GOLD PLATING CONTACT AREA : GOLD 0.1μm	AWG #24~#28	1.0~1.5mm	AUTOMATIC CRIMPING MACHINE MACHINE BODY : KP-100 APPLICATOR : KP-201
HKP-F113	LOOSE PIECE TERMINAL	UNDERPLATING : NICKEL			MANUAL CRIMPING TOOL KP-309
HKP-F403	STRIP FORM TERMINAL	SELECTIVE GOLD PLATING CONTACT AREA : GOLD 0.1μm			AUTOMATIC CRIMPING MACHINE MACHINE BODY : KP-100 APPLICATOR : KP-201
HKP-F413	LOOSE PIECE TERMINAL	UNDERPLATING : NICKEL			MANUAL CRIMPING TOOL KP-309

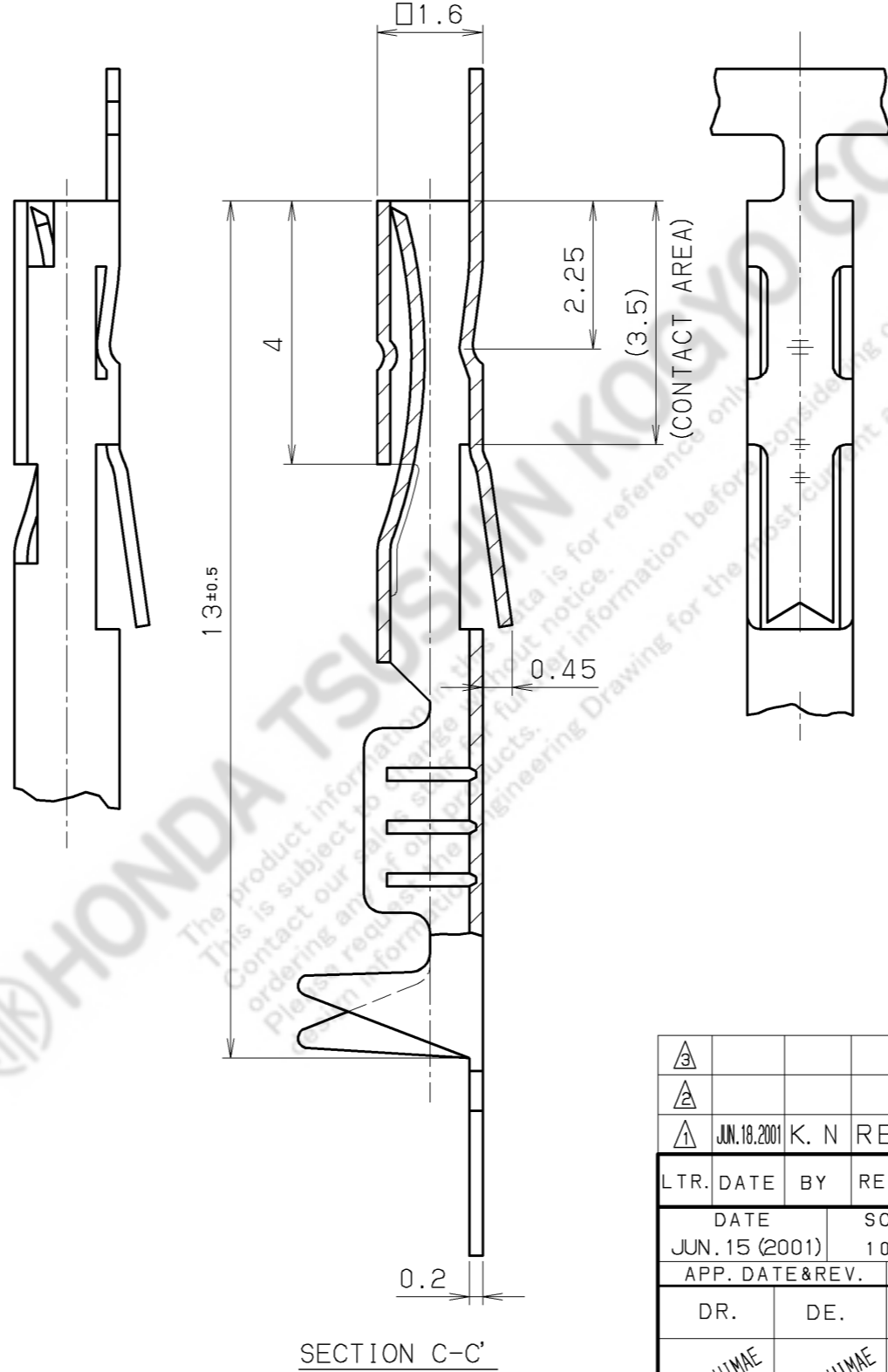
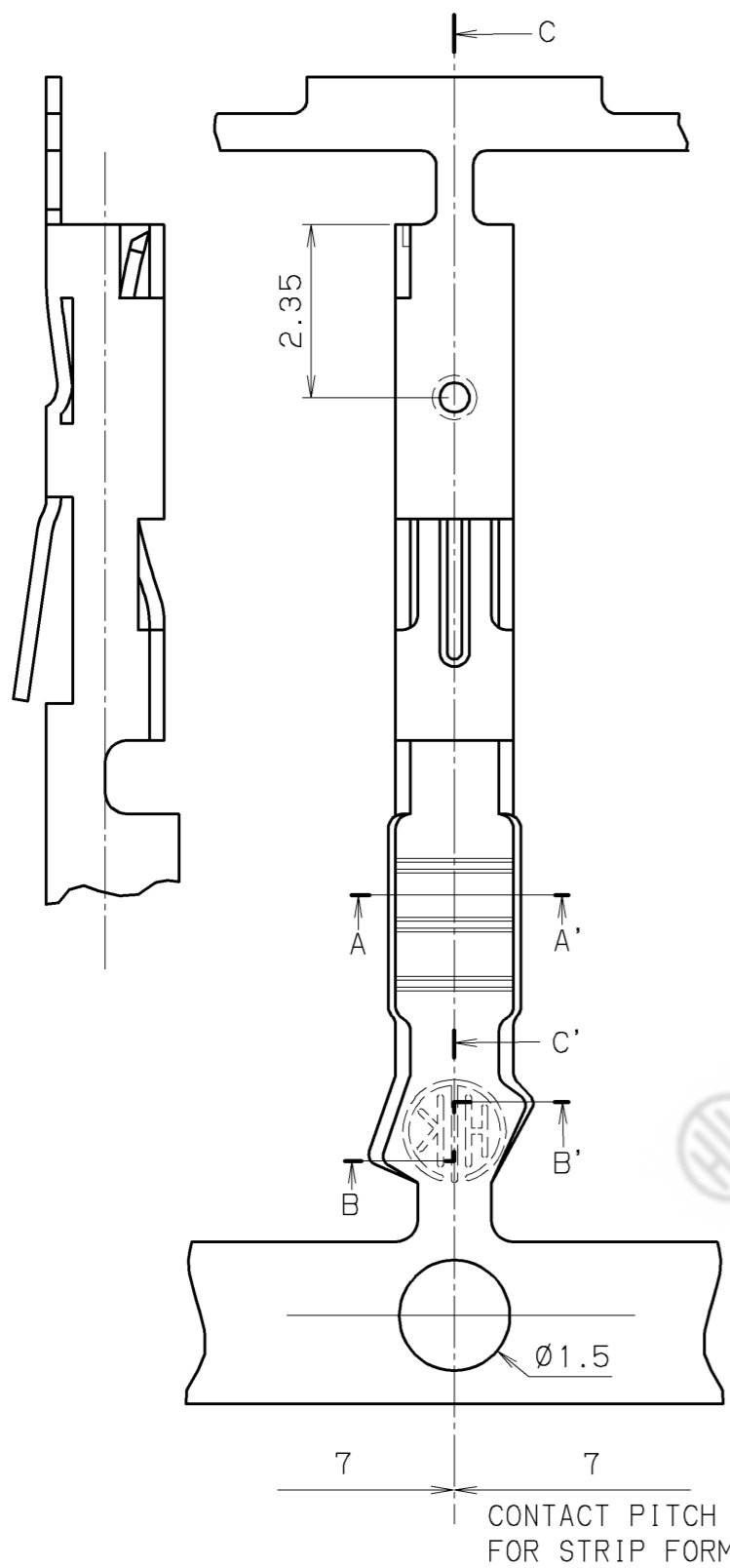
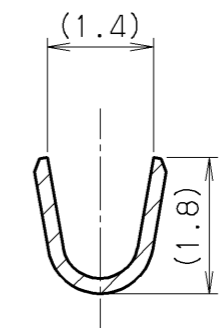
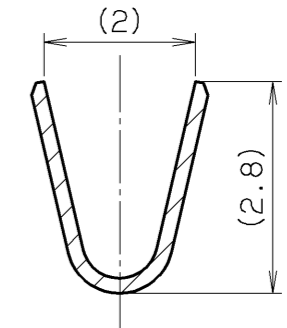


TABLE 2. APPLICABLE INSULATOR

INSULATOR	PART NO.
DOUBLE-ROW TYPE	HKP- (4~70) F02
SINGLE-ROW TYPE	HKP- (2~50) FS01

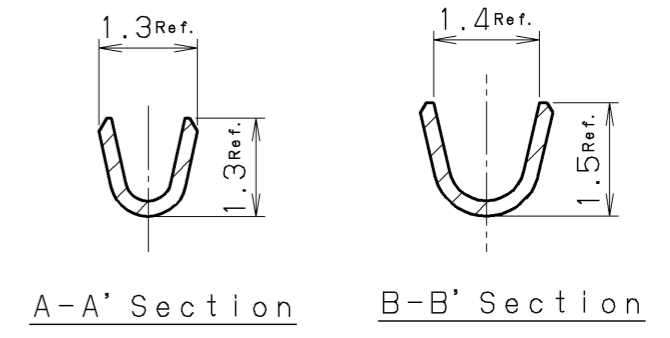
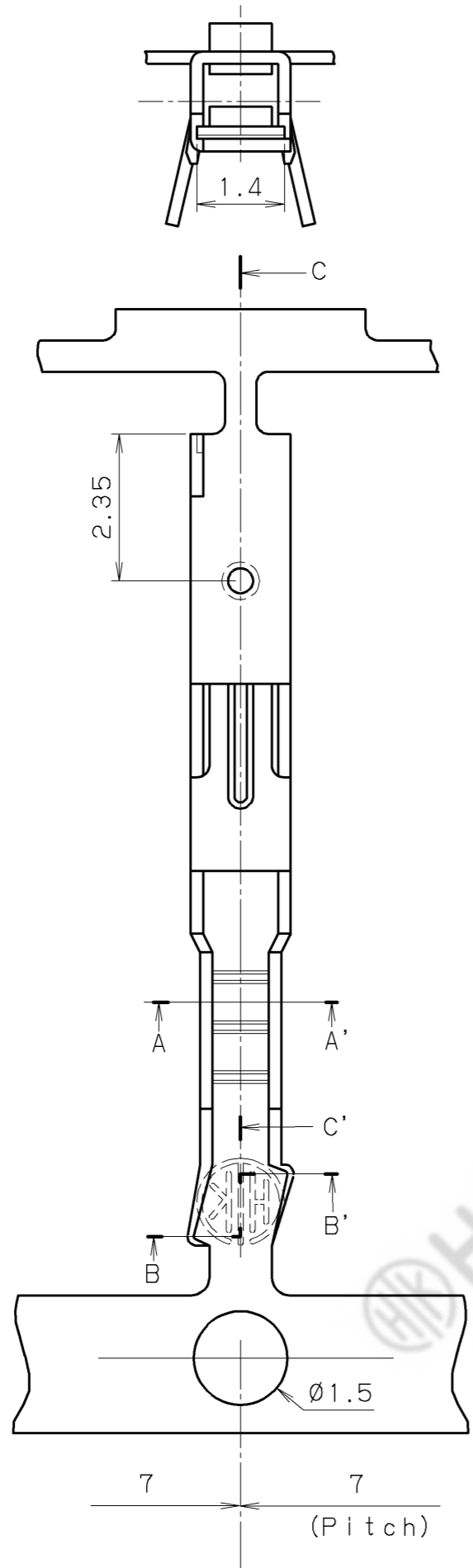


SECTION A-A'



SECTION B-B'

△3									
△2									
△	JUN.18.2001	K. N	REVISE	1	CONTACT	PHOSPHOR BRONZE	TABLE1		
LTR.	DATE	BY	REV. DESCRIPT	No.	PART NAME	MATERIAL	QTY	FINISH	NOTE
	DATE		SCALE	UNIT	3RD. A. P	HONDA TSUSHIN KOGYO CO., LTD.			
	JUN.15 (2001)		10/1	mm (INCH)					
	APP. DATE&REV.								
DR.	DE.	CHK.	CHK.	APP.	NAME	CONTACT			
K. NISHIMAE	K. NISHIMAE	—	C. NUNOKAWA	H. EBIHARA	PART NO.	HKP-F1 () 3			REV.



- Note1. Insertion force : Under 2.94N
 Withdrawal force : Over 0.392N
 (Applicable contact size : $\square 0.635\text{mm}$)
- Note2. Applicable wire size: AWG#28~32
 (Outside diameter: $\phi 0.5 \sim 0.8\text{mm}$)
- Note3. Applicable insulator
 HKP- (2~50) FS01
 HKP- (4~70) F02
- Note4. Applicable extracting tool
 HKP-KF

Table 1

Part number	Type of Terminal	Plating		Applicable crimping tool
		Contact area	Other area	
HKP-F203A	Strip Form Terminal	Gold 0.1 μm over nickel 1 μm	Gold 0.05 μm over nickel 1 μm	Automatic Crimping Machine Machine Body : HTK-100 Applicator : KP-201SA
HKP-F303A			Nickel 1 μm	
HKP-F213A	Loose Piece Terminal	Gold 0.1 μm over nickel 1 μm	Gold 0.05 μm over nickel 1 μm	Manual Crimping Tool : KP-309D
HKP-F313A			Nickel 1 μm	

HONDA
 PRINT RM
 May.12.2005
 ISSUED

\triangle									
\triangle									
\triangle					Female contacts	Phosphor Bronze		See table1	

LTR.	DATE	BY	REV.	DESCRIPT	No.	PART NAME	MATERIAL	QTY	FINISH	NOTE
------	------	----	------	----------	-----	-----------	----------	-----	--------	------

DATE May.09 (2005)		SCALE 10/1		UNIT mm (INCH)		3RD. A. P		HONDA TSUSHIN KOGYO CO., LTD.		
APP. DATE&REV.		DR.	DE.	CHK.	CHK.	APP.		NAME		Female contacts
		M. MIYAZAKI	M. MIYAZAKI	—	C. NUNOKAWA	H. EBIHARA		PART NO.		HKP-F203A, F213A, F303A, F313A
										REV.