

Straight through hole type male connector for PCB
LPC-B()M2()

For PCB

Straight Through hole

RoHS

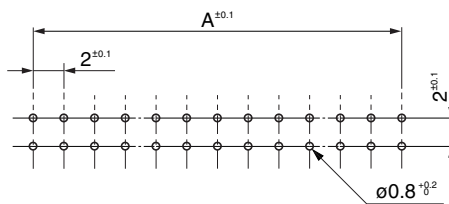
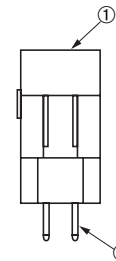
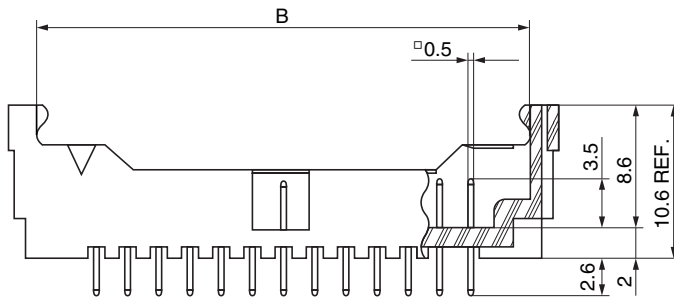
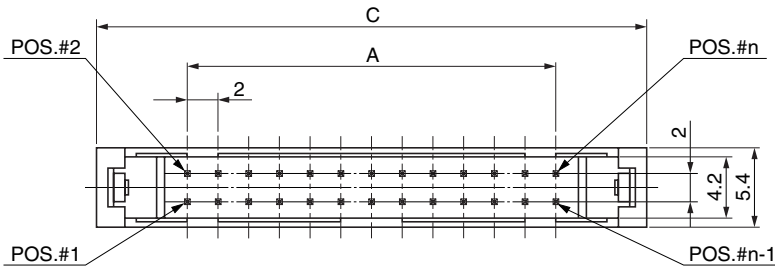


● Configuration of product Part No.

LPC-B () M2 ()

① ② ③ ④

- ① Series name
- ② No. of contacts: 10, 12, 14, 16, 20, 22, 24, 26, 30, 36, 40, 44 or 50
- ③ Straight through hole type, male connector
- ④ Contact plating
G : Contact area 0.2μm Gold plate
G2: Contact area 0.05μm Gold plate



Recommended PCB layout

● Components

| | |
|---|-----------|
| ① | Insulator |
| ② | Contacts |

Because some combinations of "Configurations of Product Part No.", are under consideration for development, please contact us for availability details.

● Dimensions

| Part No. | A | B | C |
|--------------|----|-------|------|
| LPC-B10M2() | 8 | 16.15 | 20.3 |
| LPC-B12M2() | 10 | 18.15 | 22.3 |
| LPC-B14M2() | 12 | 20.15 | 24.3 |
| LPC-B16M2() | 14 | 22.15 | 26.3 |
| LPC-B20M2() | 18 | 26.15 | 30.3 |
| LPC-B22M2() | 20 | 28.15 | 32.3 |
| LPC-B24M2() | 22 | 30.15 | 34.3 |
| LPC-B26M2() | 24 | 32.15 | 36.3 |
| LPC-B30M2() | 28 | 36.15 | 40.3 |
| LPC-B36M2() | 34 | 42.15 | 46.3 |
| LPC-B40M2() | 38 | 46.15 | 50.3 |
| LPC-B44M2() | 42 | 50.15 | 54.3 |
| LPC-B50M2() | 48 | 56.15 | 60.3 |

Mating connectors: LPC-B series female connectors for flat cable