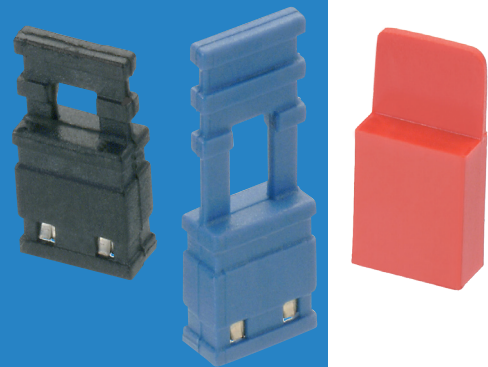


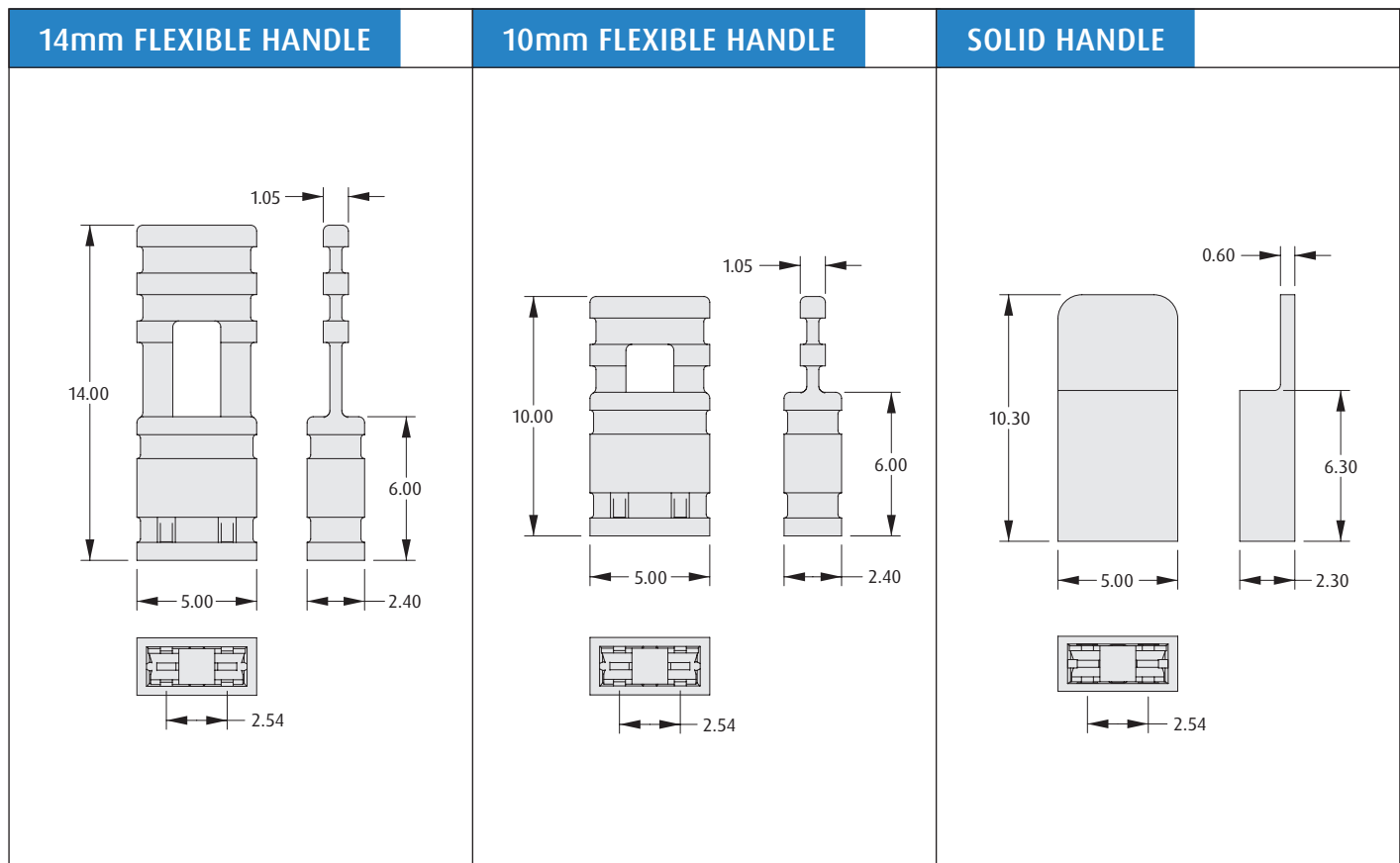
M20 Connectors

Jumper Sockets - Closed Top

- Can be fitted by hand, giving an alternative on-board programming method to DIP switches.
- Twin beam contact for cost-effective reliability.
- Suitable for use with mating M20 male pin headers, with 0.64mm square pins.
- Choice of colours available.
- Flexible handle for ease of location and withdrawal.



2.54mm (.100") PITCH



HOW TO ORDER

M7 **XXX** - **XX**

SERIES CODE

14mm HANDLE	10mm HANDLE	SOLID HANDLE	
680	684	965	Grey
681	685	966	Red
682	686	967	Black
683	687		Blue

FINISH

05	Gold
46	Tin

All dimensions in mm.