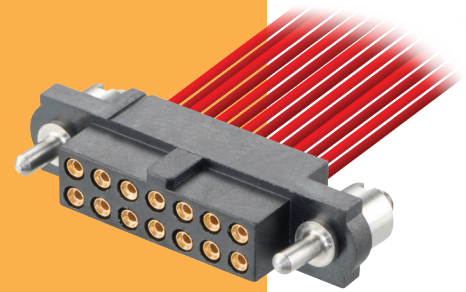


Datamate J-Tek Connectors

Female Crimp Kit - Guide Pin, 101Lok

- Guide pin style includes board mount fixing.
- 101Lok fixing gives secure, fast and simple mating; no special tooling required. Just a simple 101-degree turn is required to fix the connectors together.
- Connectors mate with Datamate J-Tek male connectors with applicable jackscrews or 101Lok fixings.
- Part numbers are for a complete kit of a housing and the applicable number of contacts.



DATAMATE J-TEK

GUIDE PIN JACKSCREWS	101LOK														
<p>Board Mount Nut, 2 per connector</p> <table border="1" style="background-color: #f4a460; width: 100%;"> <thead> <tr> <th colspan="2">CALCULATION</th> </tr> </thead> <tbody> <tr> <td>A</td> <td>B + 12</td> </tr> <tr> <td>B</td> <td>Total no. of contacts - 2</td> </tr> <tr> <td>C</td> <td>B + 7</td> </tr> </tbody> </table>	CALCULATION		A	B + 12	B	Total no. of contacts - 2	C	B + 7							
CALCULATION															
A	B + 12														
B	Total no. of contacts - 2														
C	B + 7														
TOOLS	WIRE STRIPPING DETAILS														
<p>Recommended Crimp Tool - M22520/2-01</p> <p>Positioner - T5747</p> <p>Contact Insertion/Removal Tool - Z80-280</p> <ul style="list-style-type: none"> Spare and pre-cabled contacts shown on following pages. Instruction sheets available at www.harwin.com/instructions. 															
HOW TO ORDER															
<p>M80 - 4 X1 XX XX FX</p>															
<table border="1" style="width: 100%;"> <thead> <tr> <th colspan="2">SERIES CODE</th> </tr> </thead> <tbody> <tr> <td>C1</td> <td>Small Bore (24-28 AWG)</td> </tr> <tr> <td>D1</td> <td>Large Bore (22 AWG)</td> </tr> <tr> <td>E1</td> <td>Extra Small Bore (28-32 AWG)</td> </tr> </tbody> </table>	SERIES CODE		C1	Small Bore (24-28 AWG)	D1	Large Bore (22 AWG)	E1	Extra Small Bore (28-32 AWG)	<table border="1" style="width: 100%;"> <thead> <tr> <th colspan="2">JACKSCREW</th> </tr> </thead> <tbody> <tr> <td>F3</td> <td>Guide Pin</td> </tr> <tr> <td>FC</td> <td>101Lok</td> </tr> </tbody> </table>	JACKSCREW		F3	Guide Pin	FC	101Lok
SERIES CODE															
C1	Small Bore (24-28 AWG)														
D1	Large Bore (22 AWG)														
E1	Extra Small Bore (28-32 AWG)														
JACKSCREW															
F3	Guide Pin														
FC	101Lok														
<table border="1" style="width: 100%;"> <thead> <tr> <th colspan="2">TYPE</th> </tr> </thead> <tbody> <tr> <td>C1</td> <td>Small Bore (24-28 AWG)</td> </tr> <tr> <td>D1</td> <td>Large Bore (22 AWG)</td> </tr> <tr> <td>E1</td> <td>Extra Small Bore (28-32 AWG)</td> </tr> </tbody> </table>	TYPE		C1	Small Bore (24-28 AWG)	D1	Large Bore (22 AWG)	E1	Extra Small Bore (28-32 AWG)	<table border="1" style="width: 100%;"> <thead> <tr> <th colspan="2">FINISH</th> </tr> </thead> <tbody> <tr> <td>05</td> <td>Gold</td> </tr> <tr> <td>42</td> <td>Gold + Tin</td> </tr> </tbody> </table>	FINISH		05	Gold	42	Gold + Tin
TYPE															
C1	Small Bore (24-28 AWG)														
D1	Large Bore (22 AWG)														
E1	Extra Small Bore (28-32 AWG)														
FINISH															
05	Gold														
42	Gold + Tin														
<table border="1" style="width: 100%;"> <thead> <tr> <th>TOTAL NO. OF CONTACTS</th> </tr> </thead> <tbody> <tr> <td>04, 06, 08, 10, 12, 14, 20, 26, 34, 42, 50</td> </tr> </tbody> </table>		TOTAL NO. OF CONTACTS	04, 06, 08, 10, 12, 14, 20, 26, 34, 42, 50												
TOTAL NO. OF CONTACTS															
04, 06, 08, 10, 12, 14, 20, 26, 34, 42, 50															

All dimensions in mm.