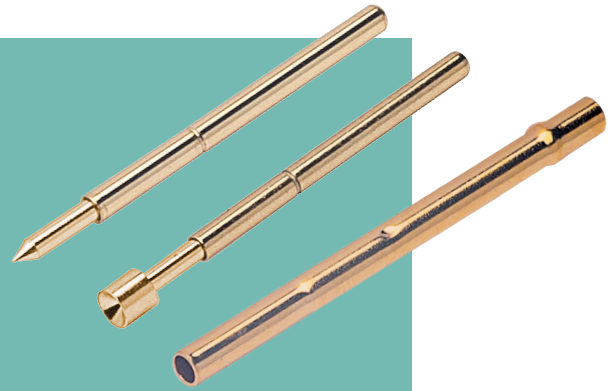


# ATE Spring Probes

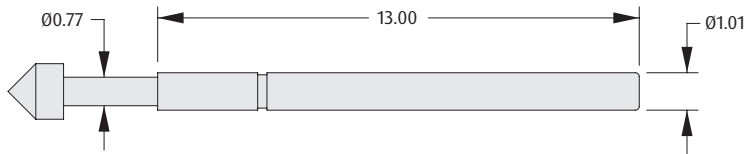
## Two-Part Test Probes for 1.90mm Pitch

- Two piece test probe – probe can be replaced when damaged or worn out, without re-soldering to test jig.
- Sleeve can be assembled as either interference fit to a test jig, and wire attached to the rear bore, or clearance fit and soldered to a PCB for electrical connection.
- Slim miniature probes, suitable for mounting at 1.90mm pitch between centres.

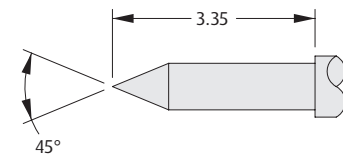


### Mechanical

Full travel: 2.54mm  
 Spring force  
 At full travel: 1.26N  
 At 2/3 travel: 0.88N

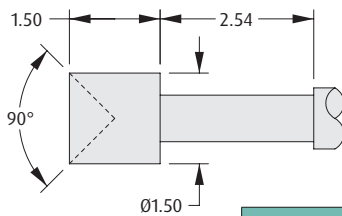


### SPEAR HEAD



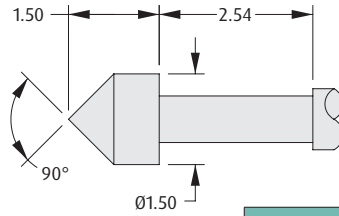
ORDER CODE  
**P19-0121**

### CONCAVE HEAD



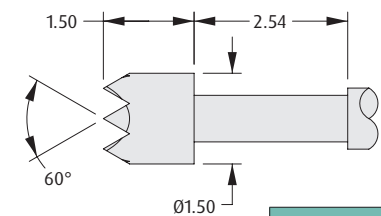
ORDER CODE  
**P19-1121**

### CONVEX HEAD



ORDER CODE  
**P19-2221**

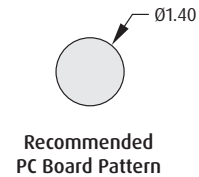
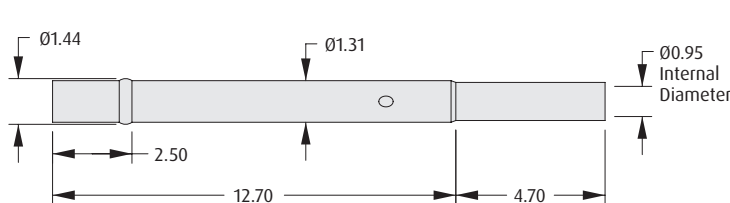
### SERRATED HEAD



ORDER CODE  
**P19-4021**

### SLEEVE

- Suitable for use with 24 to 30AWG wire.



ORDER CODE  
**S19-501**

All dimensions in mm.