

**MICRO SWITCH**

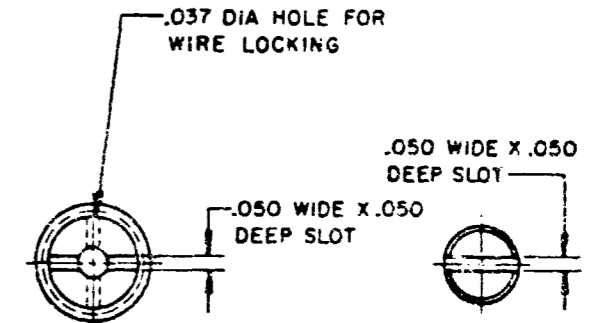
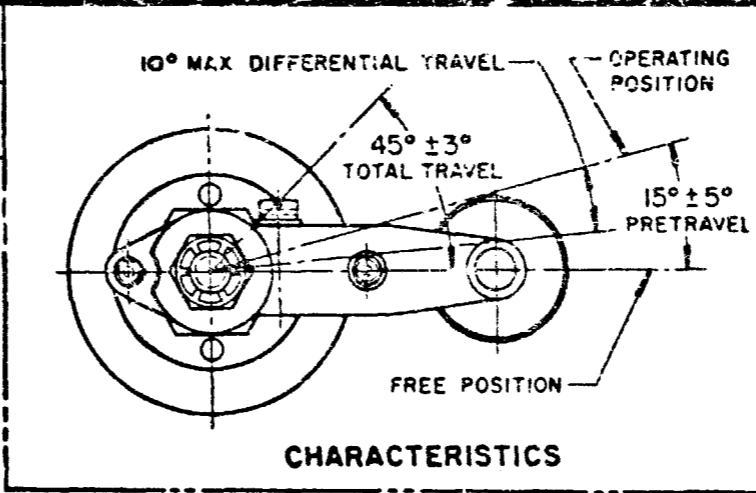
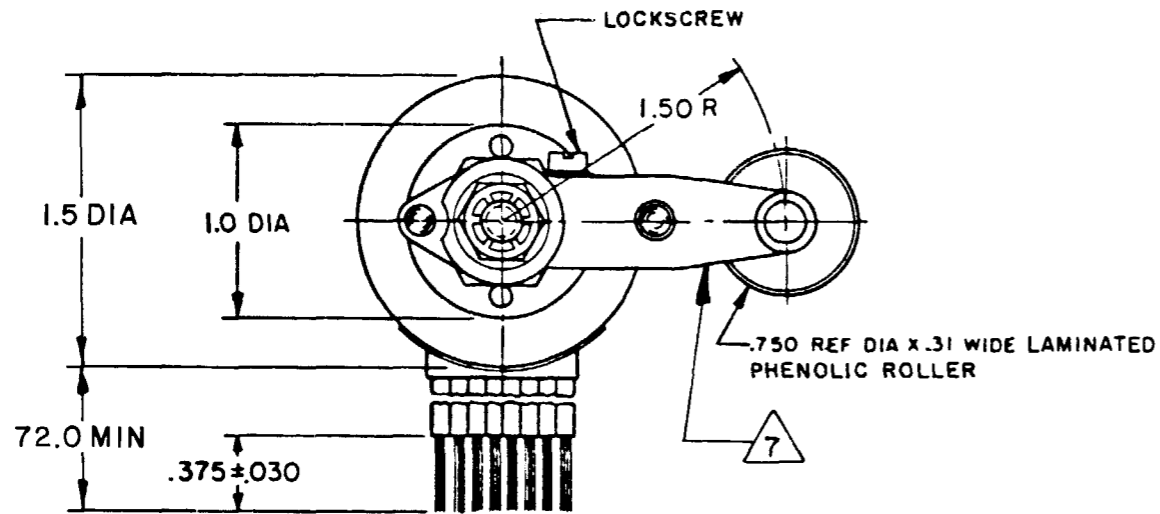
FREEPORT, ILLINOIS, U.S.A.  
A DIVISION OF HONEYWELL

FED. MFG. CODE 91929

**SWITCH-ENCLOSED**

CATALOG LISTING  
**34EN1-6**

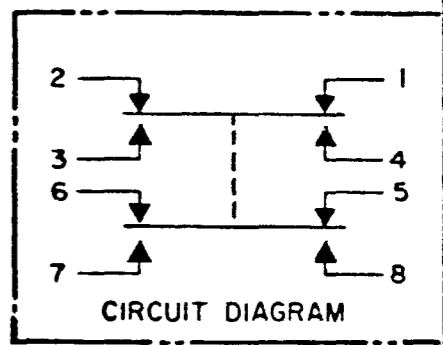
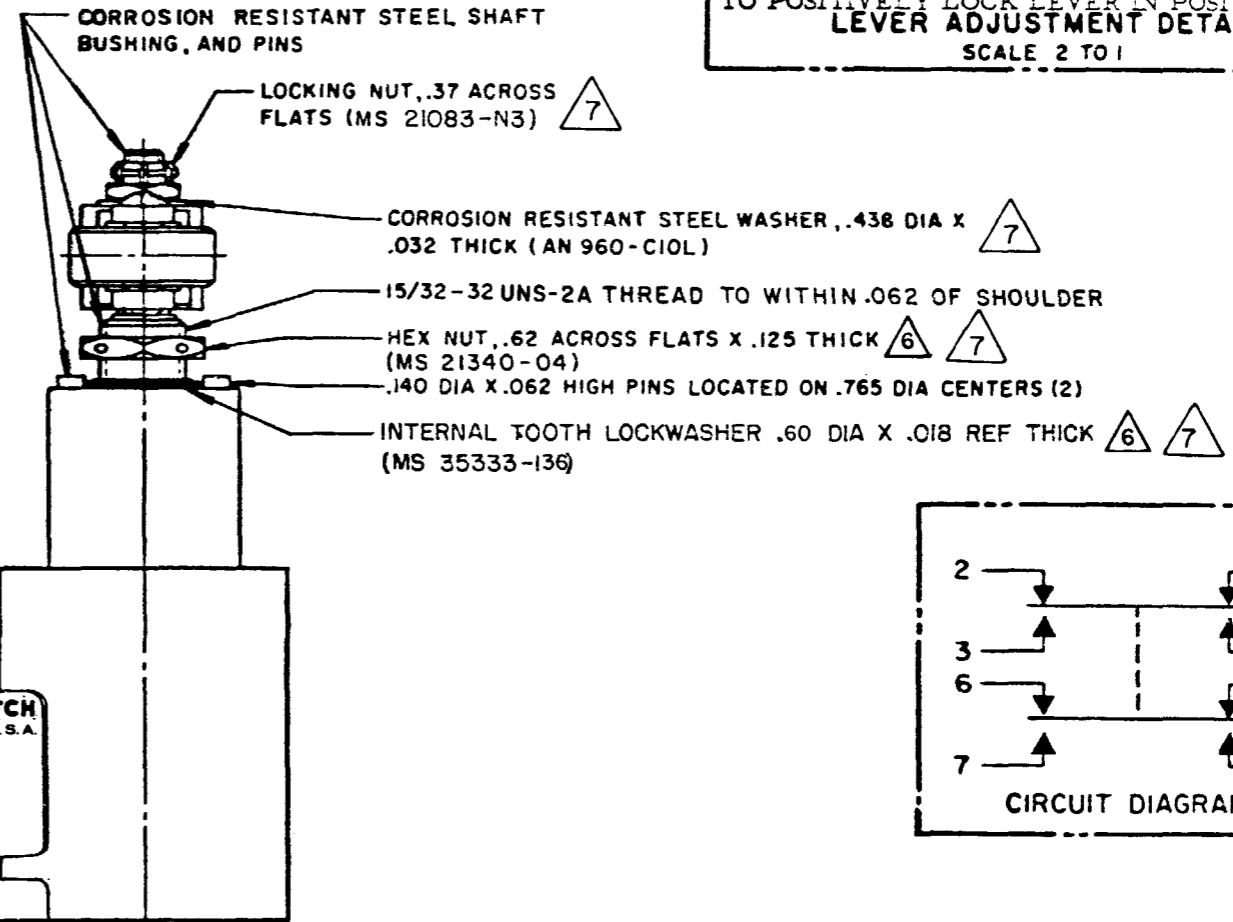
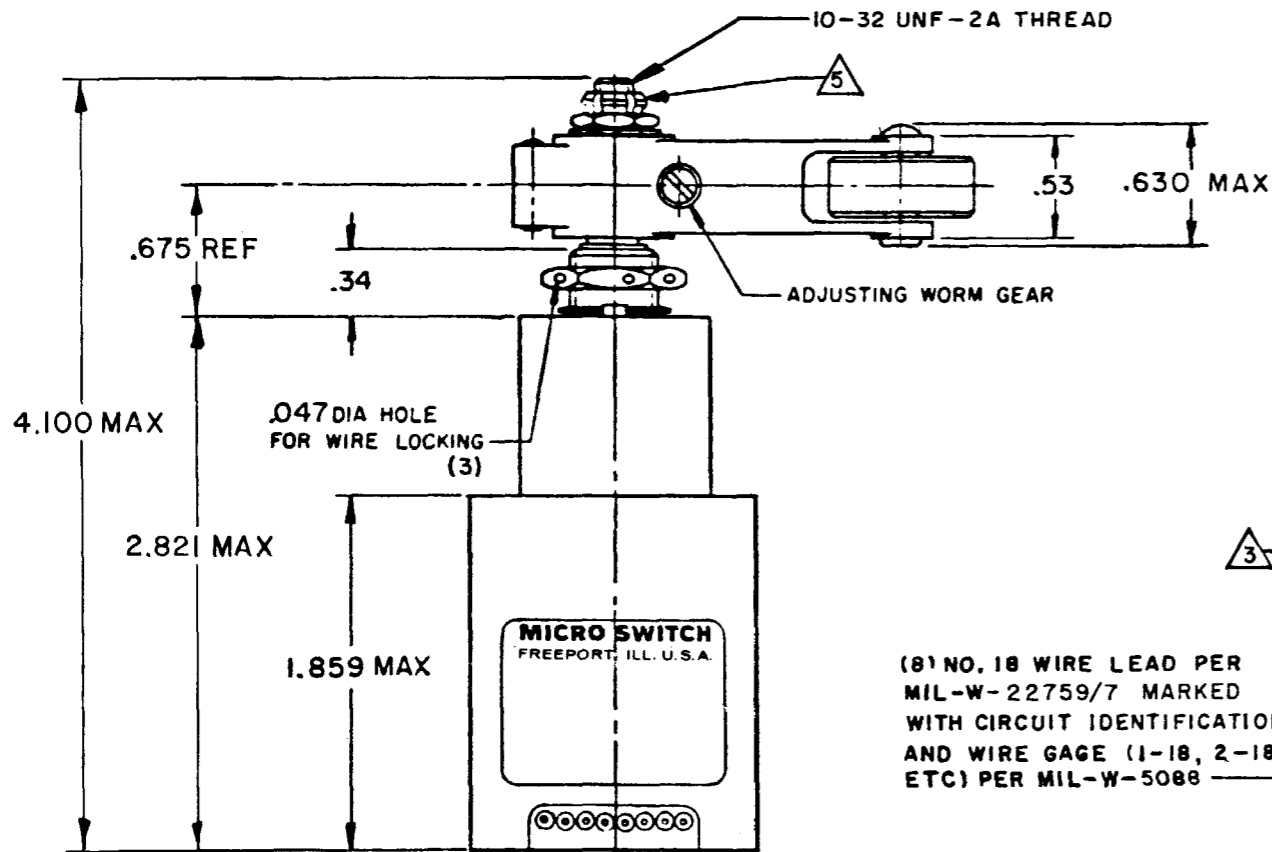
MILITARY STANDARD  
MS 21320-8



**LOCKSCREW**  
ROLLER LEVER MAY BE ADJUSTED FOR AN INFINITE NUMBER OF POSITIONS THRU 360°. ADJUSTMENT IS MADE BY LOOSENING THE LOCKING NUT AND THEN THE LOCKSCREW AND TURNING GEAR UNTIL LEVER IS IN DESIRED POSITION. LOCKSCREW AND LOCKNUT ON SHAFT IS THEN TIGHTENED TO POSITIVELY LOCK LEVER IN POSITION.

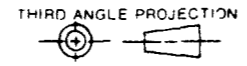
**GEAR**  
**LEVER ADJUSTMENT DETAIL**  
SCALE 2 TO 1

34EN1-6  
 M  
 DRAWING NUMBER  
 32  
 ISSUE  
 REVISIONS  
 A C082363  
 JAK  
 24 JAN 96  
 27 NOV 78  
 16 NOV 78  
 FORMTEK



(8) NO. 18 WIRE LEAD PER MIL-W-22759/7 MARKED WITH CIRCUIT IDENTIFICATION AND WIRE GAGE (1-18, 2-18, ETC) PER MIL-W-5088

THIS DRAWING COVERS A PROPRIETARY ITEM AND IS THE PROPERTY OF MICRO SWITCH, A DIVISION OF HONEYWELL. THIS DRAWING IS NOT TO BE COPIED OR USED WITHOUT THE APPROVAL OF MICRO SWITCH.



SCALE FULL

DO NOT SCALE PRINT

**CHARACTERISTICS**

OPERATING TORQUE ----- 12-25 IN-LB  
 RELEASE TORQUE ----- 8 IN-LB MIN  
 FULL OVERTRAVEL TORQUE - 40 IN-LB MAX

PRETRAVEL  
 DIFFERENTIAL TRAVEL  
 OVERTRAVEL  
 FREE POSITION

SEE DETAIL

**ELECTRICAL DATA**

CONTACT ARRANGEMENT (SEE CIRCUIT DIAGRAM)

28 VDC

LOAD	SEA LEVEL	50,000 FT.
RES	15	15
IND	10	10
MOTOR	5	

TOLERANCES

APPLY TO DESIGN UNITS. CONVERSIONS ARE ONLY FOR REFERENCE. UNLESS NOTED, TOLERANCES ARE:

DIM.	TOL.	DIM.	TOL.
mm	mm/in	in	mm/in
NO PLACES	X	1/64	X, X
ONE PLACE	X, X	0.4/0.18	X, X, X
TWO PLACES	X, XX	0.15/0.008	X, XX, XXX
THREE PLACES	X, XXX	0.13/0.005	X, XXX

DESIGN UNITS:  SI METRIC  US CUSTOMARY

RAW MATERIAL - COMMERCIAL STANDARD MICRO SWITCH STANDARDS APPLY

DIMENSIONS ARE TO BE MET BEFORE PROTECTIVE COATINGS ARE APPLIED

WEIGHT 15.5 OZ MAX

- NOTES**
- 1 - CORROSION RESISTANT STEEL ENCLOSURE
  - 2 - SWITCH SEALED PER MIL-S-8805 SYMBOL 4
  - 3 - CIRCUIT DIAGRAM, CATALOG LISTING AND MIL STD NO. MS21320-8 ARE SHOWN ON NAMEPLATE
  - 4 - TOTAL TRAVEL OF ROLLER LEVER IS 45° ± 3° IN COUNTER CLOCKWISE DIRECTION ONLY, WITH SPRING RETURN IN NEUTRAL
  - 5 - DO NOT APPLY MORE THAN 20-25 INCH-POUNDS OF TORQUE WHEN TIGHTENING LOCKING NUT
  - 6 - REPLACEMENT MOUNTING HARDWARE - PACKET 19PA10
  - 7 - HARDWARE MAY BE PACKAGED UNASSEMBLED PER MIL-S-8805