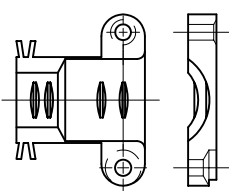
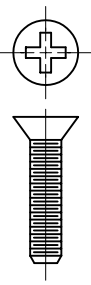
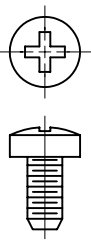
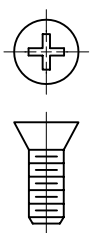
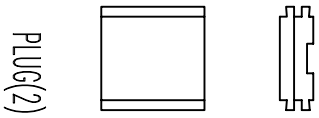
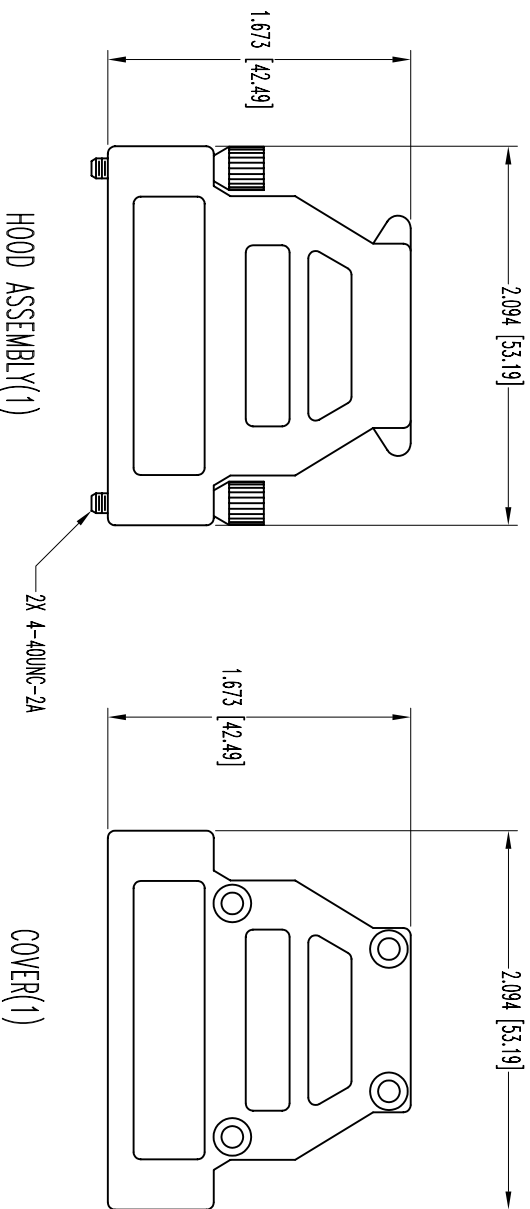



POSITRONIC INDUSTRIES RELEASES THE DATA ON THIS DRAWING TO BE REUSEABLE SINCE THE TECHNICAL INFORMATION IS GIVEN FREE OF CHARGE. THE USER EMPLOYS SUCH INFORMATION AT HIS OWN DISCRETION AND POSITRONIC INDUSTRIES ASSUMES NO LIABILITY OR RESPONSIBILITY FOR RESULTS OBTAINED OR DAMAGES INCURRED FROM USE OF SUCH INFORMATION IN WHOLE OR IN PART.

SK1990

DATE	REV	REVISION RECORD	APP	DR	CK
1-25-06	A	ECO 25404		YK	



- NOTES:
1. MATERIAL AND FINISHES:  
HOOD AND CABLE CLAMPS: ZINC, DIE CAST.  
JACKSCREWS: STEEL, NICKEL PLATE.  
SCREWS: STEEL, NICKEL PLATE.
  2. HOOD CONSISTS OF: (1) HOOD, (1) COVER, (2) PLUGS, (4) COVER SCREWS, (1) INTERNAL SCREW, (2) SHOULDER SCREWS, 1 SET CABLE CLAMPS AND (2) CABLE CLAMP SCREWS.
  3. DIMENSIONS ARE IN INCHES [MILLIMETERS].



**POSITRONIC INDUSTRIES INC.**  
www.connectpositronic.com

SCALE	N.T.S.	DRAWN BY	YK
TITLE	D SERIES	APPROVED BY	
DATE	1-25-06	DRAWING NUMBER	SK1990
ANGULAR TOL.	± N/A	REV.	A
DECIMAL TOL.	± N/A		

D25000GEO