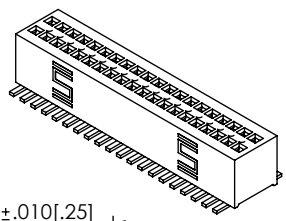


DO NOT
SCALE FROM
THIS PRINT



CLE-1XX-XX-X-DV-XX

- No OF POSITIONS
-04 THRU -90
(PER ROW)
- LEAD STYLE
-01
(USE C-80-01-X)
- PLATING SPECIFICATION
-F: 3µ" FLASH SELECTIVE GOLD
ON ENTIRE CONTACT
-G: 10µ" LIGHT GOLD ON ENTIRE
CONTACT

- OPTION
- P: PICK & PLACE PAD (SEE FIG 2, SHT 2)
(AVAILABLE ON POSITIONS -08 THRU -90 ONLY))
(USE LMP-10)
- TR: TAPE & REEL PACKAGING
- A: ALIGNMENT PIN (SEE FIG 3 & 4, SHT 2)
(MOLDED TO POSITION OR STAKED)
(SAMTEC DISCRETION WHICH -A PIN IS USED)
(STAKE 7 POSITIONS MIN)
(MOLD 4 POSITION MIN)
- K: POLYIMIDE FILM PAD
(AVAILABLE ON POS. 8 THRU 90 ONLY)
(SEE FIG 5, SHT 2)
(USE K-DOT-.157-.250-.005)
- ROW SPECIFICATION
-D: DOUBLE ROW - VERTICAL
(USE CLE-90-D)

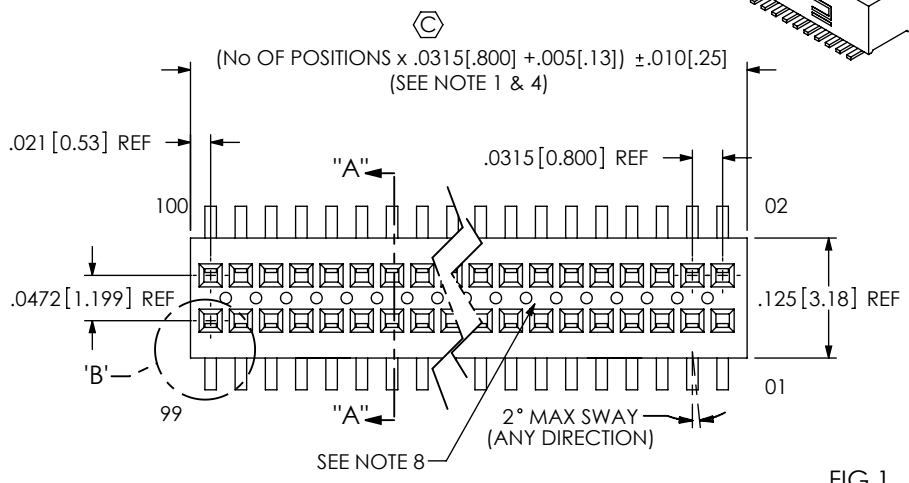
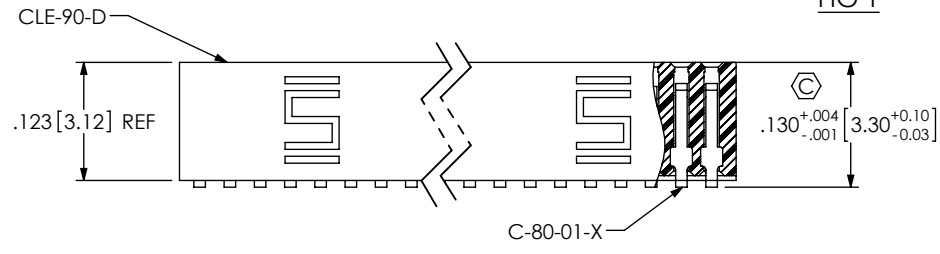
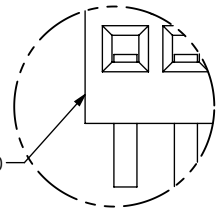


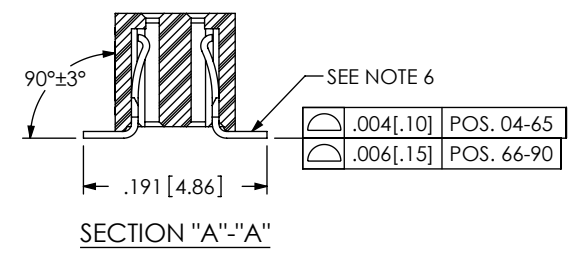
FIG 1



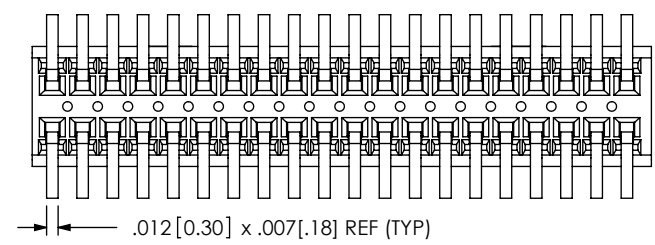
END WALLS TO BE
SYMMETRICAL ±.0050



DETAIL 'B'
SCALE TO: 1



SECTION "A"-"A"



NOTES:

1. Ⓢ REPRESENTS A CRITICAL DIMENSION.
2. NOTE DELETED.
3. MINIMUM PUSHOUT FORCE: .5 LB.
4. WILL LOSE TWO POSITIONS FOR EVERY CUT MADE. MAXIMUM CUT FLASH TO BE .010 [.25] WITH NO FLASH IN HOLES OR EXTENDING BELOW LEADS.
5. NOTE DELETED.
6. BURR ALLOWANCE: .003 [.08] MAX
7. ENDWALL AFTER CUTTING: .0115±.0025 [.292±.064]
8. VOIDS ON TOP SURFACE TO BE LOCATED AT VENDOR DISCRETION TO CONTROL PART WARPAGE.

UNLESS OTHERWISE SPECIFIED, DIMENSIONS ARE IN INCHES. TOLERANCES ARE: DECIMALS ANGLES .XX: ±.01 [.3] 2° .XXX: ±.005 [.13] .XXXX: ±.0020 [.051]	PROPRIETARY NOTE THIS DOCUMENT CONTAINS INFORMATION CONFIDENTIAL AND PROPRIETARY TO SAMTEC, INC. AND SHALL NOT BE REPRODUCED OR TRANSFERRED TO OTHER DOCUMENTS OR DISCLOSED TO OTHERS OR USED FOR ANY PURPOSE OTHER THAN THAT WHICH IT WAS OBTAINED WITHOUT THE EXPRESSED WRITTEN CONSENT OF SAMTEC, INC.		
		520 PARK EAST BLVD., NEW ALBANY, IN 47150 PHONE: 812-944-6733 FAX: 812-948-5047 e-Mail: info@SAMTEC.com code 55322	
MATERIAL: DO NOT SCALE DRAWING SHEET SCALE: 5:1 INSULATOR: LCP, UL 94 VO, COLOR: BLACK		DESCRIPTION: .8MM x 1.2MM C.L. SOCKET STRIP ASSEMBLY	
CONTACT: BeCu 190 ALLOY [TM04] THICKNESS: .007 [.18] REF		DWG. NO. CLE-1XX-XX-X-DV-XX	
F:\DWG\MISC\MKTG\CLE-1XX-XX-X-DV-XX-MKT.SLDDRW		BY: PURVIS 10/23/95	SHEET 1 OF 2

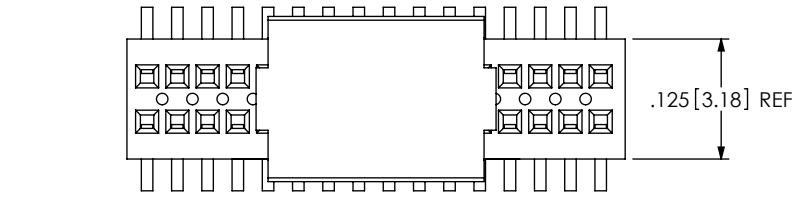


FIG 2
-P OPTION
8 POSITIONS MIN

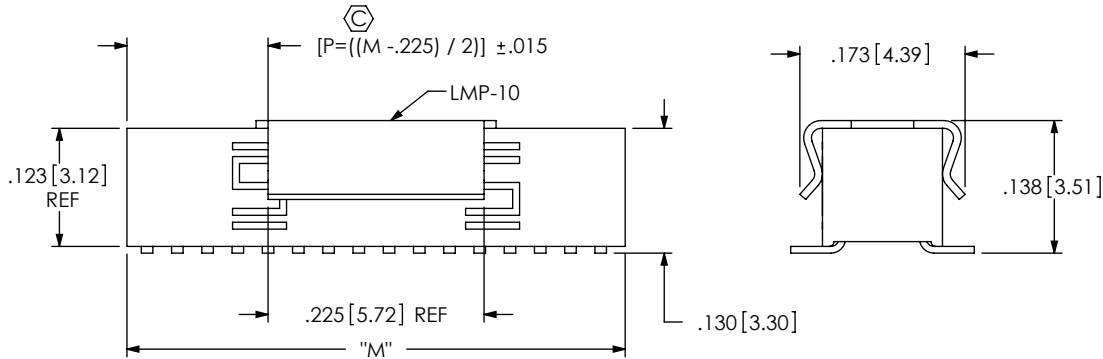
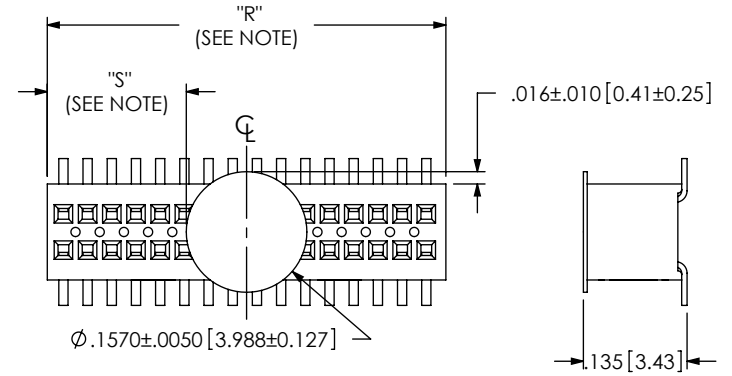


FIG 5
-K: POLYIMIDE FILM PAD
8 POSITIONS MIN



NOTE: "R" = USED MEASURED DIMENSION (REF)
"S" = [("R" - .1575 [4.00]) / 2] ± .020 [.51]

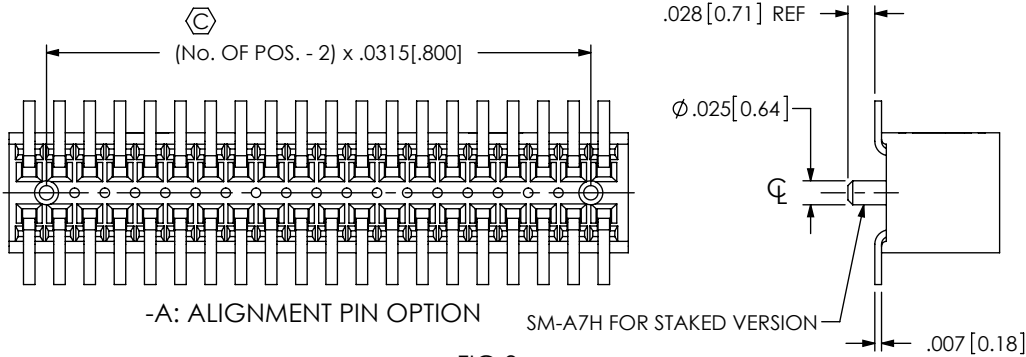


FIG 3
-A STAKED OPTION
7 POSITIONS MIN

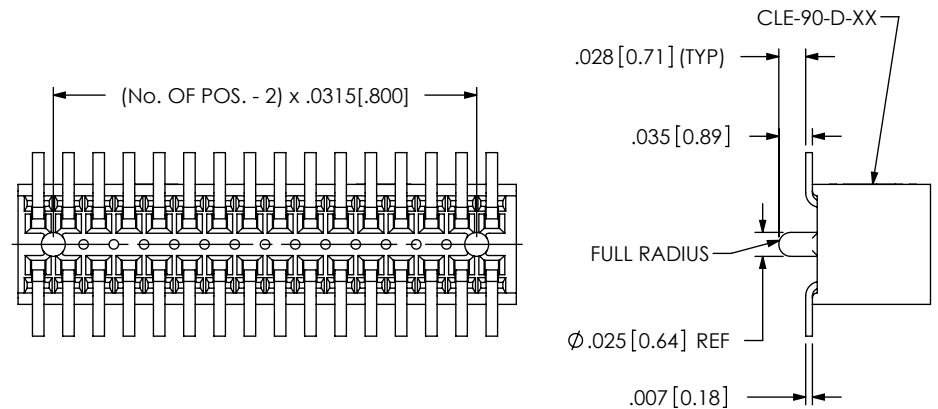
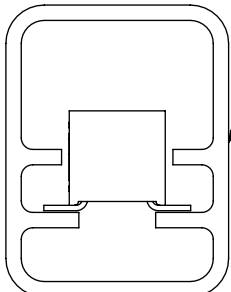
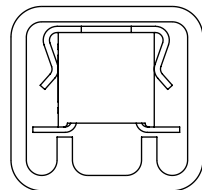


FIG 4
-A OPTION (MOLDED)
4 POSITIONS MIN

PACKAGING VIEW



PT-1-24-03-43
TP-24



PT-1-24-01-62
TP-12

FOR CLE-104/105-01-X-DV &
CLE-104/105-01-X-DV-A

ALL OTHER POSITIONS AND OPTIONS

PROPRIETARY NOTE
THIS DOCUMENT CONTAINS INFORMATION
CONFIDENTIAL AND PROPRIETARY TO
SAMTEC, INC. AND SHALL NOT BE REPRODUCED
OR TRANSFERRED TO OTHER DOCUMENTS OR
DISCLOSED TO OTHERS OR USED FOR ANY
PURPOSE OTHER THAN THAT WHICH IT WAS
OBTAINED WITHOUT THE EXPRESSED WRITTEN
CONSENT OF SAMTEC, INC.

DO NOT SCALE DRAWING

SHEET SCALE: 5:1

samtec

520 PARK EAST BLVD, NEW ALBANY, IN 47150
PHONE: 812-944-6733 FAX: 812-948-5047
e-Mail info@SAMTEC.com code 55322

DESCRIPTION:
.8MM x 1.2MM C.L. SOCKET STRIP ASSEMBLY

DWG. NO.
CLE-1XX-XX-X-DV-XX

BY: PURVIS 10/23/95 SHEET 2 OF 2